

# PETERS ANGUS

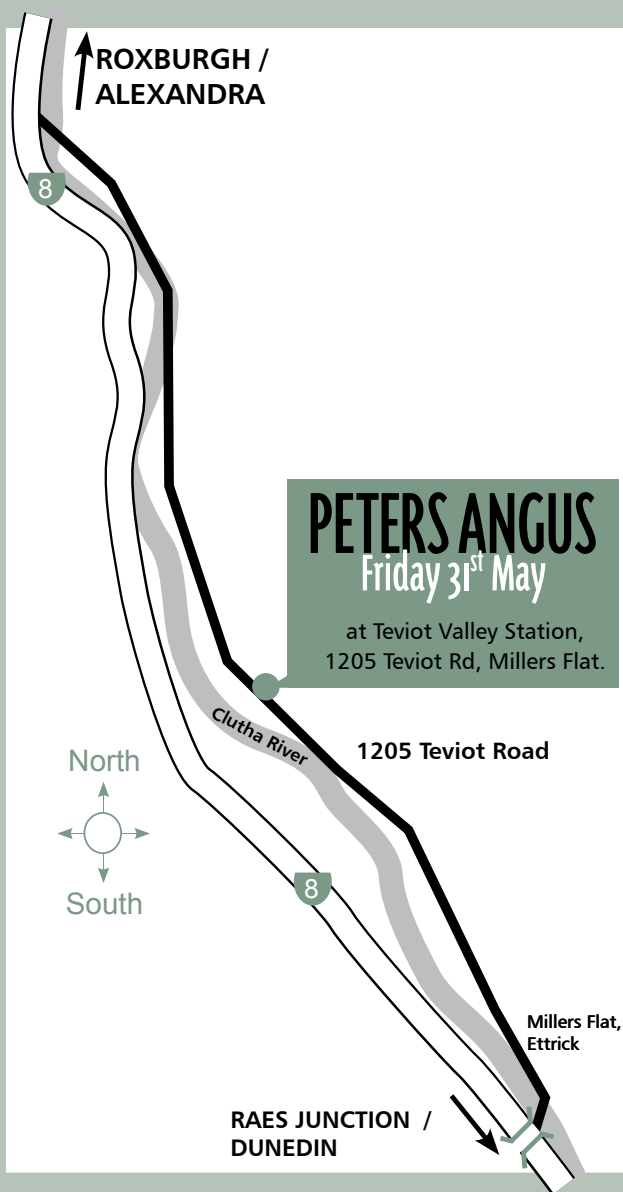


## 2yr Old Bull Sale

Friday 31<sup>st</sup> May 2019,  
11am on the property



# DIRECTION MAP



**TREVOR & KAREN PETERS**  
Teviot Valley Station,  
1205 Teviot Road, RD 2 Roxburgh 9572  
**PH:** (03) 44 66 030 **MOBILE:** 027 201 4490  
**Shane Carter's Mobile:** 027 364 1438  
**EMAIL:** [atpeters@xtra.co.nz](mailto:atpeters@xtra.co.nz)

# PETERS ANGUS

**Friday 31<sup>st</sup> May 2019**  
**11am**

to be held at  
Teviot Valley Station,  
1205 Teviot Rd, Millers Flat, RD2,  
Roxburgh 9572, Otago.

**30 rising 2 year old bulls**

**Cattle available for viewing from 9.30am on Sale Day**  
**Prior inspection welcome ~ Refreshments at end of sale**

TB Status C10  
All bulls tested Negative BVD Antigen  
All animals AM and NH free

**AUCTIONEERS Carrfields Livestock**  
**Andrew Holt Mobile: 0274 963 311**  
*Overriding commission of 6%*  
*to outside companies buying bulls*

**Agents:** Donald Baines  
(General Manager Livestock) ..... 0273 288 781  
  
Roger Keach  
(Livestock Genetics Representative) .. 0274 178 641  
  
Callum Dunnett  
(Livestock Representative)..... 0275 870 131  
  
Brent Taylor  
(Livestock Representative)..... 0273 332 421

**PGG Wrightsons Livestock Genetics:**

Callum McDonald ..... 0274 336 443  
Mark Cuttance ..... 0274 424 742  
Chris Swale ..... 0274 425 032

# INDEX

LOT NO.	BULL NO.
1	363
2	427
3	353
4	360
5	365
6	306
7	349
8	348
9	399
10	413
11	451
12	456
13	336
14	326
15	375
16	426
17	307
18	319
19	343
20	401
21	486
22	408
23	380
24	366
25	422
26	489
27	512
28	381
29	462
30	302

BULL NO.	LOT NO.
302	30
306	6
307	17
319	18
326	14
336	13
343	19
348	8
349	7
353	3
360	4
363	1
365	5
366	24
375	15
380	23
381	28
399	9
401	20
408	22
413	10
422	25
426	16
427	2
451	11
456	12
462	29
486	21
489	26
512	27



# FOREWORD



Another year has come and gone. Last year I was waiting on my knee operation but I'm please to say that I'm now up and running on all cylinders again. I believe trying times are ahead for all farmers with regards to our environment and the involvement of governments – do they not realise that it's not only animals that fart.

All jokes aside, we've had a pretty good year, a little bit dry in the late autumn but now mid-April it's still very mild. We, the Peters, as always, are challenging most things out there and we are definitely not getting older, but we are getting wiser.

It's rewarding that prices are holding up and that the \$100 is now the new low for lamb and that \$4.60/kg the new low for beef but remembering as long as farming goes there will always be a bottom day that we are not expecting.

Peters Angus offers 30 Angus Bulls in our 10th Annual line up at Teviot. With the stud cattle being moved to the "Clutha Downs" property, this will be our last sale at Teviot Valley Station. We will still endeavour to maintain our strong philosophy in challenging our cattle under normal commercial conditions, so our clients can achieve optimum financial gains in their commercial businesses.

The bulls have been tested for BVD and vaccinated but will still need their annual booster prior to mating.

As you can see our succession planning that we started last year with the three siblings being let go on their own, continues into the next assiduous phase where going forward we are taking all the sheep as well as the stud cattle back to the home property, Clutha Downs.

Bull inspections welcome anytime. We look forward to your support for this, our last sale here in the Teviot Valley.

Cheers from Trevor, Karen, Shane and the team

**Peters Angus**

## CONDITIONS OF SALE

1. The sale will be conducted under the usual terms and conditions of the N.Z Stock and Station Agents Assn.
2. Each lot becomes the property of the purchaser at the fall of the hammer.
3. Although every care has been taken to ensure accuracy in compiling this catalogue no responsibility is accepted for any errors that maybe included therein.
4. The vendors reserve the right to alter the order of sale at anytime.
5. No warranty will be given by the auctioneer with any lot, and as all lots are open for inspection prior to the commencement of the sale, the same will be sold with all faults if any. No compensation shall be made in respect of any fault or error of description of any lots; however the vendors reserve the right to make compensation to a buyer if it is the vendors wish.
6. Leave full and explicit instructions in regard to transport.
7. **Insurance:** The auctioneers can arrange insurance on any stock. An insurance rep will be present on the day.

# UNDERSTANDING EBVS

An animal's breeding value is its genetic merit, half of which will be passed on to its progeny. While we will never know the exact breeding value, for performance traits it is possible to make good estimates. These estimates are called Estimated Breeding Values (EBVs).

In the calculation of EBVs, the performance of individual animals within a contemporary group is directly compared to the average of other animals in that group. A contemporary group consists of animals of the same sex and age class within a herd, run under the same management conditions and treated equally. Indirect comparisons are made between animals reared in different contemporary groups, through the use of pedigree links between the groups.

EBVs are expressed in the units of measurement for each particular trait. They are shown as + ive or - ive differences between an individual animal's genetics difference and the genetic base to which the animal is compared. For example, a bull with an EBV of +50 kg for 600-Day Weight is estimated to have genetic merit 50 kg above the breed base of 0 kg. Since the breed base is set to an historical benchmark, the average EBVs of animals in each year drop has changed over time as a result of genetic progress within the breed.

The absolute value of any EBV is not critical, but rather the differences in EBVs between animals. Particular animals should be viewed as being "above or below breed average" for a particular trait.

Whilst EBVs provide the best basis for the comparison of the genetic merit of animals reared in different environments and management conditions, they can only be used to compare animals analysed within the same analysis. Consequently, NZ ANGUS BREEDPLAN EBVs cannot be validly compared with EBVs for any other breed.

Although EBVs provide an estimate of an animal's genetic merit for a range of production traits, they do not provide information for all of the traits that must be considered during selection of functional animals. In all situations, EBVs should be used in conjunction with visual assessment for other traits of importance (such as structural soundness, temperament, fertility etc). A recommended practice is to firstly select breeding stock based on EBVs and to then select from this group to ensure that the final selections are otherwise acceptable.

EBVs are published for a range of traits covering fertility, calving ease, milking ability, growth, carcase merit and feed efficiency. When using EBVs to assist in selection decisions it is important to achieve a balance between the different groups of traits and to place emphasis on those traits that are important to the particular herd, markets and environment. One of the advantages of having a comprehensive range of EBVs is that it is possible to avoid extremes in particular traits and select for animals with balanced overall performance.

**Calving Ease EBVs (%)** are based on calving difficulty scores, birth weights and gestation length information. More positive EBVs are favourable and indicate easier calving.

**CE % Direct** = Direct Calving Ease - The EBV for direct calving ease indicates the influence of the sire on calving ease in purebred females calving at two years of age.

**CE % Daughters** = Daughters' Calving Ease - The EBV for daughters' calving ease indicates how easily that sire's daughters will calve at two years of age.

**Gestation Length EBV (days)** is an estimate of the time from conception to the birth of the calf and is based on AI and hand mating records. Lower (negative) GL EBVs indicate shorter gestation length and therefore easier calving and increased growth after birth.

**Birth Weight EBV (kg)** is based on the measured birth weight of progeny, adjusted for dam age. The lower the value, the lighter the calf at birth and the lower the likelihood of a difficult birth. This is particularly important when selecting sires for use over heifers.

**200-Day Growth EBV (kg)** is calculated from the weight of progeny taken between 80 and 300 days of age. Values are adjusted to 200 days and for age of dam. This EBV is the best single estimate of an animal's genetic merit for growth to early ages.

**400-Day Weight EBV (kg)** is calculated from the weight of progeny taken between 301 and 500 days of age, adjusted to 400 days and for age of dam. This EBV is the best single estimate of an animal's genetic merit for yearling weight.

**600-Day Weight EBV (kg)** is calculated from the weight of progeny taken between 501 and 900 days of age, adjusted to 600 days and for age of dam. This EBV is the best single estimate of an animal's genetic merit for growth beyond yearling age.

**Mature Cow Weight EBV (kg)** is based on the cow weight when the calf is weighed for weaning, adjusted to 5 years of age. This EBV is an estimate of the genetic difference in cow weight at 5 years of age and is an indicator of growth at later ages and potential feed maintenance requirements of the females in the breeding herd. Steer breeders wishing to grow animals out to a larger weight may also use the Mature Cow Weight EBV.

**Milk EBV (kg)** is an estimate of an animal's milking ability. For sires, this EBV indicates the effect of the daughter's milking ability, inherited from the sire, on the 200-day weights of her calves. For dams, it indicates her milking ability.

**Scrotal Size EBV (cm)** is calculated from the circumference of the scrotum taken between 300 and 700 days of age and adjusted to 400 days of age. This EBV is an estimate of an animal's genetic merit for scrotal size. There is also a small negative correlation with age of puberty in female progeny and therefore selection for increased scrotal size will result in reduced age at calving of female progeny.



**Days to Calving EBV (days)** indicates the fertility of the daughters of the sire. It is the time interval between the day when the female is first exposed to a bull in a paddock mating to the day when she subsequently calves. A negative EBV for days to calving indicates a shorter interval from bull-in date to calving and therefore higher fertility.

**Carcase Weight EBV (kg)** is based on abattoir carcase records and is an indicator of the genetic differences in carcase weight at the standard age of 750 days.

**Eye Muscle Area EBV (sq cm)** is calculated from measurements from live animal ultrasound scans and from abattoir carcase data, adjusted to a standard 400 kg carcase. This EBV estimates genetic differences in eye muscle area at the 12/13th rib site of a 400 kg dressed carcase. More positive EBVs indicate better muscling on animals. Sires with relatively higher EMA EBVs are expected to produce better-muscled and higher percentage yielding progeny at the same carcase weight than will sires with lower EMA EBVs.

**Rib Fat and Rump Fat EBVs (mm)** are calculated from measurements of subcutaneous fat depth at the 12/13-rib site and the P8 rump site (from live animal ultrasound scans and from abattoir carcasses) and are adjusted to a standard 400 kg carcase. These EBVs are indicators of the genetic differences in fat distribution on a standard 400 kg carcase. Sires with low, or negative, fat EBVs are expected to produce leaner progeny at any particular carcase weight than will sires with higher EBVs.

**Retail Beef Yield EBV (%)** indicates genetic differences between animals for retail yield percentage in a standard 400 kg carcase. Sires with larger EBVs are expected to produce progeny with higher yielding carcasses.

**Intramuscular Fat EBV (%)** is an estimate of the genetic difference in the percentage of intramuscular fat at the 12/13th rib site in a 400 kg carcase. Depending on market targets, larger more positive values are generally more favourable.

**Docility EBV (%)** is an estimate of the genetic differences between animals in temperament. Docility EBVs are expressed as differences in the percentage of progeny that will be scored with acceptable temperament (ie. either "docile" or "restless").

## 2019 ANGUS GROUP BREEDPLAN AVERAGE FOR 2017 BORN CALVES

CE Dir.	CE Dtrs	GL	Bth Wt	200D	400D	600D	MAT Wt	Milk
-0.2	+0.4	-4.0	+4.3	+44	+81	+106	+91	+15

SS	DTC	CWT	EMA	RIB	RUMP	RBV	IMF
+1.8	-4.2	+59	+5.1	+0.0	-0.2	+0.4	+1.7

# SELECTION INDEXES

There are currently two different selection indexes calculated for New Zealand Angus animals. These are Self-Replacing and AngusPure. Each selection index describes a different production/market scenario and relates to a typical commercial herd in New Zealand that is targeting the following specifications.

Index values are reported as EBVs, in units of relative earning capacity (\$'s) for a given market. They reflect both the short-term profit generated by a sire through the sale of his progeny, and the longer-term profit generated by his daughters in a self-replacing cow herd. More information is available on selecting animals using a selection index.

The Index values are derived using BreedObject technology. More information is available from the BreedObject web site.

**Self-Replacing Index (\$)** - Estimates genetic differences between animals in net profitability per cow joined for a self-replacing commercial herd, targeting the production of grass finished steers. Steers are assumed marketed at 525 kg live weight (280 kg carcass weight and 10 mm fat depth) at 16 months of age.

**AngusPure Index (\$)** – Estimates genetic differences between animals in net profitability per cow joined for a self-replacing commercial Angus herd, targeting the production of grass finished steers for the AngusPure programme. Steers are assumed marketed at 525 kg live weight (280 kg carcass weight and 10 mm fat depth) at 18 months of age with a significant premium paid for marbling.

Note that \$Index values for individual animals are sensitive to the assumptions used in the BreedObject analysis to calculate the selection index. More information is available on the weightings used in the New Zealand Angus Selection Indexes.

Self Replacing (SR) \$	AngusPure (AP) \$
+\$113	+\$131

## ACCURACY

Accuracy (%) is based on the amount of performance information available on the animal and its close relatives - particularly the number of progeny analysed. Accuracy is also based on the heritability of the trait and the genetic correlations with other recorded traits. Hence accuracy indicates the "confidence level" of the EBV. The higher the accuracy value the lower the likelihood of change in the animal's EBV as more information is analysed for that animal or its relatives. Even though an EBV with a low accuracy may change in the future, it is still the best estimate of an animal's genetic merit for that trait. As more information becomes available, an EBV is just as likely to increase in value, as it is to decrease.


Accuracy values range from 0-99%.

As a rule, animals should be compared on EBVs regardless of accuracy. However, where two animals have similar EBVs the one with higher accuracy could be the safer choice, assuming other factors are equal.

For further information please contact NZ Angus or BREEDPLAN.

# ANGUS GROUP BREEDPLAN EBV PERCENTILE BANDS FOR ANIMALS BORN IN 2017\*

\* Based on the results of the May 2019 Angus Group Breedplan analysis

	CALVING EASE		BIRTH		GROWTH & MATERNAL						FERTILITY		CARCASS						(\$ INDEXES)		
	Dir	Dtrs	GL	Bwt	200	400	600	Mwt	Milk	SS	DC	Cwt	EMA	Rib	P8	RBY	IMF	SR	AP		
	%	%	days	kg	kg	kg	kg	kg	kg	cm	days	kg	sq.cm	mm	mm	%	%	\$	\$		
Top 1%	+5.0	+4.4	-9.7	+0.4	+61	+109	+145	+139	+26	+3.8	-8.9	+85	+11.0	+3.1	+3.2	+2.5	+4.0	+171	+200		
Top 5%	+3.9	+3.5	-7.7	+1.7	+56	+100	+133	+123	+22	+3.1	-7.5	+77	+8.9	+2.0	+2.1	+1.9	+3.3	+155	+181		
Top 10%	+3.2	+2.9	-6.8	+2.3	+53	+96	+127	+115	+21	+2.8	-6.8	+73	+8.0	+1.5	+1.5	+1.5	+3.0	+146	+170		
Top 20%	+2.3	+2.1	-5.8	+3.0	+50	+91	+119	+106	+19	+2.4	-5.9	+69	+7.0	+1.0	+0.9	+1.2	+2.5	+136	+157		
Top 30%	+1.6	+1.6	-5.1	+3.5	+48	+87	+114	+100	+17	+2.2	-5.3	+66	+6.2	+0.6	+0.5	+0.9	+2.2	+128	+148		
Top 40%	+1.0	+1.0	-4.5	+3.9	+47	+84	+110	+95	+16	+2.0	-4.8	+63	+5.6	+0.3	+0.1	+0.7	+1.9	+120	+139		
Top 50%	+0.4	+0.5	-4.0	+4.3	+45	+81	+106	+91	+15	+1.8	-4.3	+60	+5.1	+0.0	-0.2	+0.5	+1.7	+113	+131		
Top 60%	-0.2	+0.0	-3.5	+4.7	+43	+79	+102	+86	+14	+1.6	-3.8	+57	+4.5	-0.3	-0.5	+0.2	+1.4	+105	+122		
Top 70%	-0.9	-0.5	-2.9	+5.1	+41	+76	+98	+81	+13	+1.4	-3.2	+54	+3.9	-0.6	-0.9	+0.0	+1.2	+97	+114		
Top 80%	-1.8	-1.3	-2.3	+5.6	+39	+72	+92	+75	+12	+1.2	-2.6	+50	+3.2	-1.0	-1.3	-0.3	+0.9	+89	+105		
Top 90%	-3.2	-2.3	-1.4	+6.3	+35	+66	+84	+67	+10	+0.8	-1.5	+42	+2.2	-1.5	-1.9	-0.7	+0.4	+78	+93		
Top 95%	-4.5	-3.3	-0.5	+6.9	+31	+61	+77	+59	+9	+0.5	-0.5	+36	+1.4	-1.9	-2.4	-1.0	+0.1	+70	+84		
Top 99%	-7.4	-5.2	+1.3	+8.1	+24	+50	+60	+42	+6	+0.1	+1.5	+25	-0.1	-2.8	-3.4	-1.7	-0.4	+57	+68		

# GENETIC DEFECTS

Arthrogryposis Multiplex (AM), Neuropathic Hydrocephalus (NH), Contractural Arachnodactyly (CA), Developmental Duplication (DD) AM, NH, CA and DD are simple recessive gene defects, caused by the presence of a single pair of inherited genes. The red gene in Angus cattle is a common example of recessive inheritance – the gene must be present on both sides of the pedigree for full expression.

If a carrier sire and a carrier dam are mated, 25% of the progeny will be clear of the defect, 50% will be carriers, and 25% will be affected.

A DNA test has been developed to identify carrier animals so these defects can be eliminated from the breed.

After such DNA testing, you will be given one of two results;

**AMF, NHF, CAF or DDF** = tested free of the gene

**AMC, NHC, CAC or DDC** = tested carriers of the defect.

But, to assist with the identification of carrier animals (prior to DNA testing) a 'probability test' has been developed - using updated test results and animals' pedigrees, known as Geneprob. Geneprob will identify 'at risk' animals in the breed database and assign them a status for AMS, NHS, CAS and DDS as follows;

AMFU, NHFU, CAFU and/or DDFU

= free by pedigree inference, untested

MS %, NHS%, CAS% and/or DDS% = a suspected carrier (% = level of suspicion) but un-tested.

Requires testing to validate true status.

AMF, NHF, CAF and/or DDF = tested free of the defect.

AMC, NHC, CAC and/or DDC = tested carrier of the defect.

These GeneProb analysis tests are performed every seven days.

Genotyping for these mutations should, with 100% accuracy, expedite elimination of these genes from the Angus population.

If you are unsure of any aspect of these genetic defects please don't hesitate to ring us directly or contact the AngusNZ on 06 3234484.

All bulls entered in this catalogue have a genetic status of Free or Free untested for the genetic defects mentioned above.

**Carrfields**

**Livestock**

***Carrfields Livestock are proud  
and privileged to be a part of the  
Peters Genetics Angus Bull Sale***



***For all your Livestock needs,  
please contact:***

***Donald Baines, General Manager Livestock.....0273 288 781***  
***Ryan Carr, Executive Director.....0274 324 022***  
***Phil Young, North Island Livestock Manager.....0274 981 204***  
***Roger Keach, Livestock Genetics Representative... 0274 178 641***  
***Brent Taylor, Livestock representative.....0273 332 421***  
***Andrew Holt, Auctioneer.....0274 963 311***

***[www.carrfieldslivestock.co.nz](http://www.carrfieldslivestock.co.nz)***

New Zealand  
**ANGUSPURE.**  
SOURCE AND TRACE



Buy your  
tags direct  
from us!



*Kim Lowe*  
ANGUSPURE NATIONAL  
TERRITORY MANAGER

Mobile: +64 27 550 4018

Phone: +64 6 835 8221

Email: [kim@anguspure.co.nz](mailto:kim@anguspure.co.nz)

## ANGUSPURE PARTNER

AngusPure has teamed up with those who share in our vision - to focus on the end consumer. We want to create an 'AngusPure Moment'. A moment in time when anyone, anywhere in the world, is able to share in a moment of synergy. A moment created by the finest grass-fed beef eating experience.



We have partnered with 63 of New Zealand's finest Angus studs and this stud is one of them. They are developing the best genetics and implementing the best management practices.

## A ANGUSPURE ENDORSED BULLS

AngusPure continues to endorse bulls for sale that are in the top 40% of the breed for AngusPure index. This index gives commercial farmers confidence that by using this selection tool, bulls are most likely to leave progeny with superior carcase quality and at the same time achieve desirable outcomes for self replacing herds, as the AngusPure index still rewards cattle with strong maternal attributes like calving ease, scrotal and growth, along with carcase weight. To qualify for the 'A' endorsement, bulls must meet a minimum AngusPure index of +\$139.

**These bulls will be => +\$139 for AngusPure index.**

## A+ EXTRA ANGUSPURE ENDORSEMENT FOR MARBLING

In addition to the 'A', and to assist bull buyers who wish to select for more marbling we are rewarding those animals that are in the top 25% of the breed for AngusPure index and who also have their marbling EBV (IMF) in the top 50% as well. These bulls will be awarded an 'A+' endorsement. Marbling is one of the very highest eating quality attributes and is necessary in order to meet some of the highest premium requirements for our new program, AngusPure Special Reserve. To qualify for the 'A+' endorsement, bulls must meet a minimum AngusPure index of +\$152. They must also meet the minimum marbling requirement of +1.7 for IMF

**These bulls will be => +\$152 for AngusPure index and  
=> + 1.7 for IMF EBV.**

AngusPure recognises the need to lift the amount of marbling in our New Zealand cow genetics, in order to fill the requirements of consumers going forward. Marbling has two critical components; genetics and feeding. Feeding on a rising plane of nutrition is vital but without the genetics these attributes will not be able to express themselves.

# REFERENCE SIRE:

## FOSSIL CREEK (KENHARDT) 29 (ET)

Born: 02/08/01

Tattoo: 1868100129

G T MAXIMUM

Sire: BASIN MAX 602C (IMP USA)

BASIN ELINE ERICA 315U

ZORO 20 OF LAIRDVALE

Dam: 1000 OF LAIRDVALE

LAIRDVALE 384

### 2019 ANGUS GROUP BREEDPLAN FOR 2017 BORN CALVES

	CE		GL	Bth Wt	200D	400D	600D	MAT W
	Dir.	Dtrs						
EBV	-2.4	-3.5	+0.2	+3.6	+28	+60	+74	+64
ACC	66%	54%	78%	94%	89%	83%	86%	79%
Milk	SS	DtC	CWT	EMA	RIB	FAT	RBV	IMF
+7	+1.9	+1.5	+33	+3.4	+1.2	+0.6	+0.1	-0.1
75%	79%	58%	73%	68%	69%	69%	65%	64%

### INDEXES

SR	+\$67	AP	+\$73
----	-------	----	-------

### 2019 ANGUS GROUP BREEDPLAN FOR 2017 BORN CALVES

CE Dir.	CE Dtrs	GL	Bth Wt	200D	400D	600D	MAT WT	Milk
+0.2	+0.4	-4.0	+4.3	+44	+81	+106	+91	+15

SS	DTC	CWT	EMA	RIB	RUMP	RBV	IMF
+1.8	-4.2	+59	+5.1	+0.0	-0.2	+0.4	+1.7

### INDEXES

SR	+\$113	AP	+\$131
----	--------	----	--------



# REFERENCE SIRE:



## STERN 10702

Born: 31/08/10

Tattoo: 12170010702

HIGHLANDER OF STERN

Sire: BRAVEHEART OF STERN

STERN 3886

EMU PLAINS Y552

Dam: STERN 6452

STERN 2784

### 2019 ANGUS GROUP BREEDPLAN FOR 2017 BORN CALVES

	CE		GL	Bth Wt	200D	400D	600D	MAT W
	Dir.	Dtrs						
EBV	-0.1	+0.3	+1.0	+2.4	+27	+62	+80	+46
ACC	73%	59%	87%	96%	92%	90%	90%	84%
Milk	SS	DtC	CWT	EMA	RIB	FAT	RBV	IMF
+14	+2.6	-3.6	+29	+3.8	+1.0	+1.8	-0.1	+0.8
85%	87%	51%	78%	76%	74%	77%	70%	68%

### INDEXES

SR	+\$106	AP	+\$122
----	--------	----	--------

### 2019 ANGUS GROUP BREEDPLAN FOR 2017 BORN CALVES

CE Dir.	CE Dtrs	GL	Bth Wt	200D	400D	600D	MAT WT	Milk
+0.2	+0.4	-4.0	+4.3	+44	+81	+106	+91	+15

SS	DTC	CWT	EMA	RIB	RUMP	RBV	IMF
+1.8	-4.2	+59	+5.1	+0.0	-0.2	+0.4	+1.7

### INDEXES

SR	+\$113	AP	+\$131
----	--------	----	--------

# REFERENCE SIRE:



## TE MANIA 11 470

Born: 27/08/11

Tattoo: 16932011470

TE MANIA AMBASSADOR A134 (AI) (IMP AUS)

Sire: TUWHARETOA REGENT D145(AI)(ET) (IMP AUS)

LAWSON'S HENRY VIII Y5(AI)

TE MANIA UNLIMITED U3271 (IMP AUS)

Dam: TE MANIA 05 237

TE MANIA 01 152

**A+**

### 2019 ANGUS GROUP BREEDPLAN FOR 2017 BORN CALVES

	CE		GL	Bth Wt	200D	400D	600D	MAT W
	Dir.	Dtrs						
EBV	-3.6	-3.4	-2.5	+4.9	+43	+86	+106	+93
ACC	81%	68%	94%	97%	95%	92%	92%	88%
Milk	SS	DtC	CWT	EMA	RIB	FAT	RBY	IMF
+21	+1.9	-7.6	+67	+8.8	+1.0	+1.4	-0.1	+3.9
87%	90%	61%	82%	81%	82%	81%	77%	78%

### INDEXES

SR	+\$146	AP	+\$178
----	--------	----	--------

### 2019 ANGUS GROUP BREEDPLAN FOR 2017 BORN CALVES

CE Dir.	CE Dtrs	GL	Bth Wt	200D	400D	600D	MAT WT	Milk
+0.2	+0.4	-4.0	+4.3	+44	+81	+106	+91	+15

SS	DTC	CWT	EMA	RIB	RUMP	RBY	IMF
+1.8	-4.2	+59	+5.1	+0.0	-0.2	+0.4	+1.7

### INDEXES

SR	+\$113	AP	+\$131
----	--------	----	--------

# REFERENCE SIRE:



## PETERS ANGUS 350

Born: 01/09/14

Tattoo: 21164014350

TUWHARETOA REGENT D145(AI)(ET) (IMP AUS)

Sire: TE MANIA 11 470

TE MANIA 05 237

KAIWARA 440

Dam: PETERS ANGUS 265

PETERS ANGUS 09 482

### 2019 ANGUS GROUP BREEDPLAN FOR 2017 BORN CALVES

	CE		GL	Bth Wt	200D	400D	600D	MAT W
	Dir.	Dtrs						
EBV	-3.2	-4.6	-1.6	+4.6	+39	+77	+98	+89
ACC	59%	43%	65%	89%	84%	78%	78%	72%
Milk	SS	DtC	CWT	EMA	RIB	FAT	RBY	IMF
+22	+1.3	-4.7	+60	+6.4	+0.5	+0.9	-0.9	+2.9
61%	75%	42%	67%	61%	61%	63%	57%	56%

### INDEXES

SR	+\$108	AP	+\$136
----	--------	----	--------

### 2019 ANGUS GROUP BREEDPLAN FOR 2017 BORN CALVES

CE Dir.	CE Dtrs	GL	Bth Wt	200D	400D	600D	MAT WT	Milk
+0.2	+0.4	-4.0	+4.3	+44	+81	+106	+91	+15

SS	DTC	CWT	EMA	RIB	RUMP	RBY	IMF
+1.8	-4.2	+59	+5.1	+0.0	-0.2	+0.4	+1.7

### INDEXES

SR	+\$113	AP	+\$131
----	--------	----	--------

# REFERENCE SIRE:



## PETERS ANGUS 472

Born: 23/09/14

Tattoo: 21164014472

HYLINE RIGHT TIME 338 (IMP )

Sire: WHANGARA 404

WHANGARA 0419

Dam: PETERS ANGUS 300

9/06 OF MANGARATA

### 2019 ANGUS GROUP BREEDPLAN FOR 2017 BORN CALVES

	CE		GL	Bth Wt	200D	400D	600D	MAT W
	Dir.	Dtrs						
EBV	-0.9	+0.0	-1.4	+3.6	+30	+59	+81	+60
ACC	52%	36%	54%	83%	72%	66%	68%	65%
Milk	SS	DtC	CWT	EMA	RIB	FAT	RBV	IMF
+17	+1.3	+0.1	+40	+2.5	+1.2	+1.5	-0.1	+0.5
55%	53%	34%	56%	45%	47%	47%	43%	41%

### INDEXES

SR	+\$80	AP	+\$96
----	-------	----	-------

### 2019 ANGUS GROUP BREEDPLAN FOR 2017 BORN CALVES

CE Dir.	CE Dtrs	GL	Bth Wt	200D	400D	600D	MAT WT	Milk
+0.2	+0.4	-4.0	+4.3	+44	+81	+106	+91	+15

SS	DTC	CWT	EMA	RIB	RUMP	RBV	IMF
+1.8	-4.2	+59	+5.1	+0.0	-0.2	+0.4	+1.7

### INDEXES

SR	+\$113	AP	+\$131
----	--------	----	--------



**XCELL**

**BREEDING AND  
VETERINARY SERVICES**

**SPECIALISTS  
IN CATTLE  
REPRODUCTION**

**EMBRYO  
TRANSFER  
FACILITY NOW  
AVAILABLE**

**‘YOUR SUCCESS  
IS OUR BUSINESS’**

**SUPPORTING THE BEEF INDUSTRY  
SINCE 1996**

**Export approved semen collection facility  
Synchronization and AI programming service**

**On farm semen collection**

**Bull fertility and evaluation testing**

**Reliable storage and despatch**

**New Zealand wide service**

**Xcell Breeding and Veterinary Services 143 Rangiora Woodend  
Road, Woodend 7610, North Canterbury ph 03 312 2191**

**[www.xcell.co.nz](http://www.xcell.co.nz)**

**Lot: 1****PETERS ANGUS 363**

Born: 07/09/17

Tattoo: 21164017363

BASIN MAX 602C (IMP USA)

Sire: FOSSIL CREEK (KENHARDT) 29 (ET)

1000 OF LAIRDVALE

S CHISUM 6175 (IMP USA)

Dam: PETERS ANGUS 2

PETERS ANGUS 27

**2019 ANGUS GROUP BREEDPLAN FOR 2017 BORN CALVES**

	CE		GL	Bth Wt	200D	400D	600D	MAT W
	Dir.	Dtrs						
<b>EBV</b>	<b>-2.5</b>	<b>+0.0</b>	<b>-1.6</b>	<b>+4.4</b>	<b>+36</b>	<b>+69</b>	<b>+86</b>	<b>+74</b>
<b>ACC</b>	<b>44%</b>	<b>36%</b>	<b>83%</b>	<b>72%</b>	<b>61%</b>	<b>57%</b>	<b>59%</b>	<b>56%</b>
<b>Milk</b>	<b>SS</b>	<b>DtC</b>	<b>CWT</b>	<b>EMA</b>	<b>RIB</b>	<b>FAT</b>	<b>RBY</b>	<b>IMF</b>
<b>+12</b>	<b>+1.8</b>	<b>-0.8</b>	<b>+44</b>	<b>+4.2</b>	<b>+0.9</b>	<b>+1.3</b>	<b>+0.3</b>	<b>-0.1</b>
<b>50%</b>	<b>51%</b>	<b>37%</b>	<b>50%</b>	<b>46%</b>	<b>48%</b>	<b>47%</b>	<b>45%</b>	<b>45%</b>

**INDEXES**

<b>SR</b>	<b>+\$93</b>	<b>AP</b>	<b>+\$97</b>
-----------	--------------	-----------	--------------

**ACTUAL DATA**

<b>B Wt</b>	<b>200D</b>	<b>400D</b>	<b>600D</b>	<b>EMA</b>
<b>35kg</b>	<b>309kg</b>	<b>598kg</b>	<b>620kg</b>	<b>89</b>

**AM Status:** AMFU**CA Status:** CAFU**NH Status:** NHFU**DD Status:** DDFU

**Comments:** First of many Fossil Creek son's in this years catalogue, thickness and stamina.

Purchaser:

\$

**2019 ANGUS GROUP BREEDPLAN FOR 2017 BORN CALVES**

CE Dir.	CE Dtrs	GL	Bth Wt	200D	400D	600D	MAT WT	Milk
+0.2	+0.4	-4.0	+4.3	+44	+81	+106	+91	+15

SS	DTC	CWT	EMA	RIB	RUMP	RBY	IMF
+1.8	-4.2	+59	+5.1	+0.0	-0.2	+0.4	+1.7

**INDEXES**

<b>SR</b>	<b>+\$113</b>	<b>AP</b>	<b>+\$131</b>
-----------	---------------	-----------	---------------

**Lot: 2****PETERS ANGUS 427**

Born: 23/09/17

Tattoo: 21164017427

BRAVEHEART OF STERN

Sire: STERN 10702

STERN 6452

PETERS ANGUS 10

Dam: PETERS ANGUS 08 27

64/06 OF MANGARATA

**2019 ANGUS GROUP BREEDPLAN FOR 2017 BORN CALVES**

	CE		GL	Bth Wt	200D	400D	600D	MAT W
	Dir.	Dtrs						
<b>EBV</b>	<b>-1.4</b>	<b>-2.1</b>	<b>+0.6</b>	<b>+4.4</b>	<b>+32</b>	<b>+64</b>	<b>+84</b>	<b>+71</b>
ACC	45%	35%	56%	74%	69%	67%	72%	64%
Milk	SS	DtC	CWT	EMA	RIB	FAT	RBV	IMF
<b>+10</b>	<b>+1.0</b>	<b>-3.2</b>	<b>+34</b>	<b>+2.8</b>	<b>+0.7</b>	<b>+1.1</b>	<b>-0.3</b>	<b>+0.7</b>
57%	70%	35%	57%	54%	52%	54%	48%	45%

**INDEXES**

SR	<b>+\$91</b>	AP	<b>+\$108</b>
----	--------------	----	---------------

**ACTUAL DATA**

B Wt	200D	400D	600D	EMA
<b>36kg</b>	<b>260kg</b>	<b>560kg</b>	<b>604kg</b>	<b>94</b>

**AM Status:** AMFU**CA Status:** CAFU**NH Status:** NHFU**DD Status:** DDFU

**Comments:** Thickness and power on a great Stern son. A very well put together bull with style and presence.

Purchaser: \$

**2019 ANGUS GROUP BREEDPLAN FOR 2017 BORN CALVES**

CE Dir.	CE Dtrs	GL	Bth Wt	200D	400D	600D	MAT WT	Milk
+0.2	+0.4	-4.0	+4.3	+44	+81	+106	+91	+15

SS	DTC	CWT	EMA	RIB	RUMP	RBV	IMF
+1.8	-4.2	+59	+5.1	+0.0	-0.2	+0.4	+1.7

**INDEXES**

SR	<b>+\$113</b>	AP	<b>+\$131</b>
----	---------------	----	---------------

**Lot: 3****PETERS ANGUS 353**

Born: 05/09/17

Tattoo: 21164017353

BASIN MAX 602C (IMP USA)

Sire: FOSSIL CREEK (KENHARDT) 29 (ET)

1000 OF LAIRDVALE

KAIWARA 440

Dam: PETERS ANGUS 211

PETERS ANGUS 134

**2019 ANGUS GROUP BREEDPLAN FOR 2017 BORN CALVES**

	CE		GL	Bth Wt	200D	400D	600D	MAT W
	Dir.	Dtrs						
<b>EBV</b>	<b>-0.5</b>	<b>-1.8</b>	<b>-2.4</b>	<b>+3.3</b>	<b>+34</b>	<b>+70</b>	<b>+93</b>	<b>+81</b>
ACC	43%	35%	83%	73%	67%	64%	70%	63%
Milk	SS	DtC	CWT	EMA	RIB	FAT	RBY	IMF
<b>+14</b>	<b>+2.0</b>	<b>+0.2</b>	<b>+47</b>	<b>+3.0</b>	<b>+0.0</b>	<b>+0.1</b>	<b>-0.4</b>	<b>+1.0</b>
51%	68%	38%	55%	52%	53%	55%	49%	46%

**INDEXES**

SR	<b>+\$88</b>	AP	<b>+\$111</b>
----	--------------	----	---------------

**ACTUAL DATA**

B Wt	200D	400D	600D	EMA
<b>35kg</b>	<b>262kg</b>	<b>568kg</b>	<b>600kg</b>	<b>94</b>

**AM Status:** AMFU**CA Status:** CAFU**NH Status:** NHFU**DD Status:** DDFU**Comments:** Flesh, thickness, barrel with good temperment .

Purchaser:

\$

**2019 ANGUS GROUP BREEDPLAN FOR 2017 BORN CALVES**

CE Dir.	CE Dtrs	GL	Bth Wt	200D	400D	600D	MAT WT	Milk
+0.2	+0.4	-4.0	+4.3	+44	+81	+106	+91	+15

SS	DTC	CWT	EMA	RIB	RUMP	RBY	IMF
+1.8	-4.2	+59	+5.1	+0.0	-0.2	+0.4	+1.7

**INDEXES**

SR	<b>+\$113</b>	AP	<b>+\$131</b>
----	---------------	----	---------------



**Lot: 4****PETERS ANGUS 360**

Born: 06/09/17

Tattoo: 21164017360

BASIN MAX 602C (IMP USA)

Sire: FOSSIL CREEK (KENHARDT) 29 (ET)

1000 OF LAIRDVALE

STERN 10702

Dam: PETERS ANGUS 90

PETERS ANGUS 07 12

**2019 ANGUS GROUP BREEDPLAN FOR 2017 BORN CALVES**

	CE		GL	Bth Wt	200D	400D	600D	MAT W
	Dir.	Dtrs						
<b>EBV</b>	<b>-1.1</b>	<b>-2.4</b>	<b>-0.8</b>	<b>+3.7</b>	<b>+26</b>	<b>+55</b>	<b>+71</b>	<b>+58</b>
<b>ACC</b>	<b>42%</b>	<b>33%</b>	<b>83%</b>	<b>74%</b>	<b>67%</b>	<b>64%</b>	<b>70%</b>	<b>63%</b>
<b>Milk</b>	<b>SS</b>	<b>DtC</b>	<b>CWT</b>	<b>EMA</b>	<b>RIB</b>	<b>FAT</b>	<b>RBV</b>	<b>IMF</b>
<b>+8</b>	<b>+2.3</b>	<b>-0.9</b>	<b>+28</b>	<b>+2.8</b>	<b>+1.3</b>	<b>+1.1</b>	<b>+0.3</b>	<b>+0.2</b>
<b>50%</b>	<b>68%</b>	<b>36%</b>	<b>54%</b>	<b>50%</b>	<b>51%</b>	<b>53%</b>	<b>46%</b>	<b>43%</b>

**INDEXES**

<b>SR</b>	<b>+\$76</b>	<b>AP</b>	<b>+\$87</b>
-----------	--------------	-----------	--------------

**ACTUAL DATA**

<b>B Wt</b>	<b>200D</b>	<b>400D</b>	<b>600D</b>	<b>EMA</b>
<b>36kg</b>	<b>246kg</b>	<b>532kg</b>	<b>600kg</b>	<b>89</b>

**AM Status:** AMFU**CA Status:** CAFU**NH Status:** NHFU**DD Status:** DDFU**Comments:** Tidy compact bull, with strong top and thickness.

Purchaser:

\$

**2019 ANGUS GROUP BREEDPLAN FOR 2017 BORN CALVES**

<b>CE Dir.</b>	<b>CE Dtrs</b>	<b>GL</b>	<b>Bth Wt</b>	<b>200D</b>	<b>400D</b>	<b>600D</b>	<b>MAT WT</b>	<b>Milk</b>
<b>+0.2</b>	<b>+0.4</b>	<b>-4.0</b>	<b>+4.3</b>	<b>+44</b>	<b>+81</b>	<b>+106</b>	<b>+91</b>	<b>+15</b>

<b>SS</b>	<b>DTC</b>	<b>CWT</b>	<b>EMA</b>	<b>RIB</b>	<b>RUMP</b>	<b>RBV</b>	<b>IMF</b>
<b>+1.8</b>	<b>-4.2</b>	<b>+59</b>	<b>+5.1</b>	<b>+0.0</b>	<b>-0.2</b>	<b>+0.4</b>	<b>+1.7</b>

**INDEXES**

<b>SR</b>	<b>+\$113</b>	<b>AP</b>	<b>+\$131</b>
-----------	---------------	-----------	---------------

**Lot: 5****PETERS ANGUS 365**

Born: 07/09/17

Tattoo: 21164017365

BASIN MAX 602C (IMP USA)

Sire: FOSSIL CREEK (KENHARDT) 29 (ET)

1000 OF LAIRDVALE

TE MANIA 11 470

Dam: PETERS ANGUS 340

PETERS ANGUS 48

**2019 ANGUS GROUP BREEDPLAN FOR 2017 BORN CALVES**

	CE		GL	Bth Wt	200D	400D	600D	MAT W
	Dir.	Dtrs						
<b>EBV</b>	<b>-2.3</b>	<b>-2.7</b>	<b>-0.3</b>	<b>+4.2</b>	<b>+34</b>	<b>+69</b>	<b>+88</b>	<b>+79</b>
ACC	43%	35%	82%	74%	67%	64%	70%	63%
Milk	SS	DtC	CWT	EMA	RIB	FAT	RBV	IMF
<b>+13</b>	<b>+2.3</b>	<b>-1.4</b>	<b>+44</b>	<b>+5.5</b>	<b>+0.8</b>	<b>+0.4</b>	<b>+0.2</b>	<b>+1.2</b>
50%	68%	38%	55%	52%	52%	54%	48%	45%

**INDEXES**

SR	<b>+\$94</b>	AP	<b>+\$113</b>
----	--------------	----	---------------

**ACTUAL DATA**

B Wt	200D	400D	600D	EMA
<b>34kg</b>	<b>252kg</b>	<b>558kg</b>	<b>620kg</b>	<b>97</b>

AM Status: AMFU

CA Status: CAFU

NH Status: NHFU

DD Status: DDFU

Comments: Nice clean, smooth sire with a strong top line.

Purchaser:

\$

**2019 ANGUS GROUP BREEDPLAN FOR 2017 BORN CALVES**

CE Dir.	CE Dtrs	GL	Bth Wt	200D	400D	600D	MAT WT	Milk
+0.2	+0.4	-4.0	+4.3	+44	+81	+106	+91	+15

SS	DTC	CWT	EMA	RIB	RUMP	RBV	IMF
+1.8	-4.2	+59	+5.1	+0.0	-0.2	+0.4	+1.7

**INDEXES**

SR	<b>+\$113</b>	AP	<b>+\$131</b>
----	---------------	----	---------------

**Lot: 6****PETERS ANGUS 306**

Born: 30/08/17

Tattoo: 21164017306

BASIN MAX 602C (IMP USA)

Sire: FOSSIL CREEK (KENHARDT) 29 (ET)

1000 OF LAIRDVALE

TE MANIA 11 470

Dam: PETERS ANGUS 313

PETERS ANGUS 12 35

**2019 ANGUS GROUP BREEDPLAN FOR 2017 BORN CALVES**

	CE		GL	Bth Wt	200D	400D	600D	MAT W
	Dir.	Dtrs						
<b>EBV</b>	<b>-0.9</b>	<b>-2.4</b>	<b>-2.1</b>	<b>+3.4</b>	<b>+33</b>	<b>+69</b>	<b>+85</b>	<b>+73</b>
ACC	43%	35%	55%	73%	67%	64%	70%	63%
Milk	SS	DtC	CWT	EMA	RIB	FAT	RBV	IMF
<b>+14</b>	<b>+1.8</b>	<b>-2.8</b>	<b>+46</b>	<b>+5.8</b>	<b>+1.3</b>	<b>+1.5</b>	<b>-0.2</b>	<b>+1.0</b>
50%	68%	38%	55%	52%	53%	55%	49%	46%

**INDEXES**

SR	<b>+\$103</b>	AP	<b>+\$115</b>
----	---------------	----	---------------

**ACTUAL DATA**

B Wt	200D	400D	600D	EMA
<b>31kg</b>	<b>252kg</b>	<b>552kg</b>	<b>596kg</b>	<b>98</b>

**AM Status:** AMFU**CA Status:** CAFU**NH Status:** NHFU**DD Status:** DDS3%**Comments:** Astute, proud great-doing animal with bone & constitution.

Purchaser:

\$

**2019 ANGUS GROUP BREEDPLAN FOR 2017 BORN CALVES**

CE Dir.	CE Dtrs	GL	Bth Wt	200D	400D	600D	MAT WT	Milk
+0.2	+0.4	-4.0	+4.3	+44	+81	+106	+91	+15

SS	DTC	CWT	EMA	RIB	RUMP	RBV	IMF
+1.8	-4.2	+59	+5.1	+0.0	-0.2	+0.4	+1.7

**INDEXES**

SR	<b>+\$113</b>	AP	<b>+\$131</b>
----	---------------	----	---------------

**Lot: 7****PETERS ANGUS 349**

Born: 05/09/17

Tattoo: 21164017349

BASIN MAX 602C (IMP USA)

Sire: FOSSIL CREEK (KENHARDT) 29 (ET)

1000 OF LAIRDVALE

TE MANIA 11 470

Dam: PETERS ANGUS 302

PETERS ANGUS 12 14

**2019 ANGUS GROUP BREEDPLAN FOR 2017 BORN CALVES**

	CE		GL	Bth Wt	200D	400D	600D	MAT W
	Dir.	Dtrs						
<b>EBV</b>	<b>-2.5</b>	<b>-3.2</b>	<b>-2.5</b>	<b>+5.0</b>	<b>+39</b>	<b>+78</b>	<b>+106</b>	<b>+98</b>
<b>ACC</b>	<b>43%</b>	<b>35%</b>	<b>83%</b>	<b>74%</b>	<b>67%</b>	<b>64%</b>	<b>70%</b>	<b>63%</b>
<b>Milk</b>	<b>SS</b>	<b>DtC</b>	<b>CWT</b>	<b>EMA</b>	<b>RIB</b>	<b>FAT</b>	<b>RBV</b>	<b>IMF</b>
<b>+15</b>	<b>+1.4</b>	<b>-0.7</b>	<b>+54</b>	<b>+3.3</b>	<b>+0.1</b>	<b>+0.1</b>	<b>+0.0</b>	<b>+1.1</b>
<b>50%</b>	<b>68%</b>	<b>38%</b>	<b>55%</b>	<b>52%</b>	<b>53%</b>	<b>55%</b>	<b>49%</b>	<b>46%</b>

**INDEXES**

<b>SR</b>	<b>+\$95</b>	<b>AP</b>	<b>+\$124</b>
-----------	--------------	-----------	---------------

**ACTUAL DATA**

<b>B Wt</b>	<b>200D</b>	<b>400D</b>	<b>600D</b>	<b>EMA</b>
<b>37kg</b>	<b>268kg</b>	<b>580kg</b>	<b>634kg</b>	<b>84</b>

**AM Status:** AMFU**CA Status:** CAFU**NH Status:** NHFU**DD Status:** DDFU**Comments:** Length, stretch, great movement.

Purchaser:

\$

**2019 ANGUS GROUP BREEDPLAN FOR 2017 BORN CALVES**

CE Dir.	CE Dtrs	GL	Bth Wt	200D	400D	600D	MAT WT	Milk
+0.2	+0.4	-4.0	+4.3	+44	+81	+106	+91	+15

SS	DTC	CWT	EMA	RIB	RUMP	RBV	IMF
+1.8	-4.2	+59	+5.1	+0.0	-0.2	+0.4	+1.7

**INDEXES**

<b>SR</b>	<b>+\$113</b>	<b>AP</b>	<b>+\$131</b>
-----------	---------------	-----------	---------------

**Lot: 8****PETERS ANGUS 348**

Born: 05/09/17

Tattoo: 21164017348

BASIN MAX 602C (IMP USA)

Sire: FOSSIL CREEK (KENHARDT) 29 (ET)

1000 OF LAIRDVALE

KAIWARA 440

Dam: PETERS ANGUS 485

PETERS ANGUS 08 115

**2019 ANGUS GROUP BREEDPLAN FOR 2017 BORN CALVES**

	CE		GL	Bth Wt	200D	400D	600D	MAT W
	Dir.	Dtrs						
<b>EBV</b>	<b>-2.3</b>	<b>-3.2</b>	<b>-1.0</b>	<b>+4.4</b>	<b>+34</b>	<b>+69</b>	<b>+94</b>	<b>+89</b>
ACC	42%	34%	82%	73%	67%	64%	70%	62%
Milk	SS	DtC	CWT	EMA	RIB	FAT	RBV	IMF
<b>+11</b>	<b>+1.2</b>	<b>+0.2</b>	<b>+44</b>	<b>+1.1</b>	<b>+0.5</b>	<b>+1.2</b>	<b>-0.9</b>	<b>+0.5</b>
50%	68%	38%	55%	52%	53%	54%	48%	45%

**INDEXES**

SR	<b>+\$74</b>	AP	<b>+\$96</b>
----	--------------	----	--------------

**ACTUAL DATA**

B Wt	200D	400D	600D	EMA
<b>35kg</b>	<b>243kg</b>	<b>570kg</b>	<b>610kg</b>	<b>85</b>

AM Status: AMFU

CA Status: CAFU

NH Status: NHFU

DD Status: DDFU

Comments: Durable, soft smooth, clean shoulder.

Purchaser:

\$

**2019 ANGUS GROUP BREEDPLAN FOR 2017 BORN CALVES**


CE Dir.	CE Dtrs	GL	Bth Wt	200D	400D	600D	MAT WT	Milk
+0.2	+0.4	-4.0	+4.3	+44	+81	+106	+91	+15

SS	DTC	CWT	EMA	RIB	RUMP	RBV	IMF
+1.8	-4.2	+59	+5.1	+0.0	-0.2	+0.4	+1.7

**INDEXES**

SR	<b>+\$113</b>	AP	<b>+\$131</b>
----	---------------	----	---------------

# ***Breeding Better Business***

A black and white photograph showing a herd of cattle grazing in a field. In the background, there are rolling hills under a cloudy sky.

**As part of New Zealand's largest Livestock network, our team of Genetics Specialists have more contacts, more reach and more market influence.**

**We provide more practical advice and more technical expertise. And, with the country's largest network and most popular sales events, we bring together more buyers and more sellers, delivering more value for all.**

***If you're looking for a planned approach to success, give us a call today.***

**Callum McDonald**  
Genetics Representative  
027 433 6443

**Paul Pearce**  
Livestock Representative  
027 478 5761

**Andrew Martin**  
Livestock Manager  
027 441 6431

**Lot: 9****PETERS ANGUS 399**

Born: 18/09/17

Tattoo: 21164017399

BASIN MAX 602C (IMP USA)

Sire: FOSSIL CREEK (KENHARDT) 29 (ET)

1000 OF LAIRDVALE

FLORIDALE XAMPLE 240 (ET)

Dam: PETERS ANGUS 08 150

ALTONBROOK 36

**2019 ANGUS GROUP BREEDPLAN FOR 2017 BORN CALVES**

	CE		GL	Bth Wt	200D	400D	600D	MAT W
	Dir.	Dtrs						
<b>EBV</b>	<b>-2.5</b>	<b>-3.5</b>	<b>+4.1</b>	<b>+3.7</b>	<b>+30</b>	<b>+63</b>	<b>+80</b>	<b>+73</b>
ACC	43%	35%	82%	72%	66%	63%	63%	58%
Milk	SS	DtC	CWT	EMA	RIB	FAT	RBY	IMF
<b>+15</b>	<b>+1.5</b>	<b>+2.4</b>	<b>+34</b>	<b>+2.7</b>	<b>-0.1</b>	<b>-0.6</b>	<b>+0.1</b>	<b>+0.3</b>
53%	63%	38%	53%	49%	50%	51%	46%	43%

**INDEXES**

SR	+\$61	AP	+\$73
----	-------	----	-------

**ACTUAL DATA**

B Wt	200D	400D	600D	EMA
<b>35kg</b>	<b>291kg</b>	<b>574kg</b>	<b>642kg</b>	<b>91</b>

**AM Status:** AMFU**CA Status:** CAFU**NH Status:** NHFU**DD Status:** DDFU**Comments:** A big bull with scope, barrel and capacity.

Purchaser:

\$

**2019 ANGUS GROUP BREEDPLAN FOR 2017 BORN CALVES**

CE Dir.	CE Dtrs	GL	Bth Wt	200D	400D	600D	MAT WT	Milk
+0.2	+0.4	-4.0	+4.3	+44	+81	+106	+91	+15

SS	DTC	CWT	EMA	RIB	RUMP	RBY	IMF
+1.8	-4.2	+59	+5.1	+0.0	-0.2	+0.4	+1.7

**INDEXES**

SR	+\$113	AP	+\$131
----	--------	----	--------

**Lot: 10****PETERS ANGUS 413**

Born: 20/09/17

Tattoo: 21164017413

TUWHARETOA REGENT D145(AI)(ET) (IMP AUS)

Sire: TE MANIA 11 470

TE MANIA 05 237

OAKVIEW INDEPENDENCE 524

Dam: PETERS ANGUS 08 101

PETERS ANGUS 05 5

**2019 ANGUS GROUP BREEDPLAN FOR 2017 BORN CALVES**

	CE		GL	Bth Wt	200D	400D	600D	MAT W
	Dir.	Dtrs						
<b>EBV</b>	<b>-1.6</b>	<b>-2.5</b>	<b>-2.3</b>	<b>+5.5</b>	<b>+39</b>	<b>+73</b>	<b>+98</b>	<b>+93</b>
ACC	46%	38%	57%	71%	66%	64%	67%	62%
Milk	SS	DtC	CWT	EMA	RIB	FAT	RBV	IMF
<b>+16</b>	<b>+1.6</b>	<b>-3.6</b>	<b>+51</b>	<b>+5.1</b>	<b>+0.3</b>	<b>+0.6</b>	<b>+0.3</b>	<b>+1.8</b>
57%	65%	39%	55%	52%	53%	54%	49%	49%

**INDEXES**

SR	<b>+\$108</b>	AP	<b>+\$137</b>
----	---------------	----	---------------

**ACTUAL DATA**

B Wt	200D	400D	600D	EMA
<b>33kg</b>	<b>244kg</b>	<b>548kg</b>	<b>634kg</b>	<b>87</b>

**AM Status:** AMFU**CA Status:** CAFU**NH Status:** NHFU**DD Status:** DDFU**Comments:** Typical sire traits, long, tidy & complete.

Purchaser:

\$

**2019 ANGUS GROUP BREEDPLAN FOR 2017 BORN CALVES**

CE Dir.	CE Dtrs	GL	Bth Wt	200D	400D	600D	MAT WT	Milk
+0.2	+0.4	-4.0	+4.3	+44	+81	+106	+91	+15

SS	DTC	CWT	EMA	RIB	RUMP	RBV	IMF
+1.8	-4.2	+59	+5.1	+0.0	-0.2	+0.4	+1.7

**INDEXES**

SR	<b>+\$113</b>	AP	<b>+\$131</b>
----	---------------	----	---------------



**Lot: 11****PETERS ANGUS 451**

Born: 29/09/17

Tattoo: 21164017451

TE MANIA 11 470

Sire: PETERS ANGUS 350

PETERS ANGUS 265

KAIWARA 440

Dam: PETERS ANGUS 12 124

PETERS ANGUS 08 133

**2019 ANGUS GROUP BREEDPLAN FOR 2017 BORN CALVES**

	CE		GL	Bth Wt	200D	400D	600D	MAT W
	Dir.	Dtrs						
<b>EBV</b>	<b>-1.8</b>	<b>-3.0</b>	<b>-1.6</b>	<b>+3.5</b>	<b>+32</b>	<b>+65</b>	<b>+79</b>	<b>+71</b>
ACC	43%	32%	55%	74%	67%	65%	70%	63%
Milk	SS	DtC	CWT	EMA	RIB	FAT	RBV	IMF
<b>+19</b>	<b>+0.9</b>	<b>-4.8</b>	<b>+48</b>	<b>+4.0</b>	<b>+0.8</b>	<b>+1.8</b>	<b>-1.5</b>	<b>+2.0</b>
50%	70%	35%	55%	53%	53%	55%	48%	46%

**INDEXES**

SR	<b>+\$92</b>	AP	<b>+\$106</b>
----	--------------	----	---------------

**ACTUAL DATA**

B Wt	200D	400D	600D	EMA
<b>36kg</b>	<b>243kg</b>	<b>510kg</b>	<b>566kg</b>	<b>88</b>

**AM Status:** AMFU**CA Status:** CAFU**NH Status:** NHFU**DD Status:** DDS3%

**Comments:** Homebred bull with moderate birth, smoothness and depth.

Purchaser: \$

**2019 ANGUS GROUP BREEDPLAN FOR 2017 BORN CALVES**

CE Dir.	CE Dtrs	GL	Bth Wt	200D	400D	600D	MAT WT	Milk
+0.2	+0.4	-4.0	+4.3	+44	+81	+106	+91	+15

SS	DTC	CWT	EMA	RIB	RUMP	RBV	IMF
+1.8	-4.2	+59	+5.1	+0.0	-0.2	+0.4	+1.7

**INDEXES**

SR	<b>+\$113</b>	AP	<b>+\$131</b>
----	---------------	----	---------------

**Lot: 12****PETERS ANGUS 456**

Born: 29/09/17

Tattoo: 21164017456

TUWHARETOA REGENT D145(AI)(ET) (IMP AUS)

Sire: TE MANIA 11 470

TE MANIA 05 237

PETERS ANGUS 09 462

Dam: PETERS ANGUS 279

PETERS ANGUS 09 473

**2019 ANGUS GROUP BREEDPLAN FOR 2017 BORN CALVES**

	CE		GL	Bth Wt	200D	400D	600D	MAT W
	Dir.	Dtrs						
<b>EBV</b>	<b>-1.6</b>	<b>-2.6</b>	<b>-1.8</b>	<b>+4.4</b>	<b>+39</b>	<b>+72</b>	<b>+92</b>	<b>+85</b>
ACC	46%	37%	58%	74%	69%	67%	72%	65%
Milk	SS	DtC	CWT	EMA	RIB	FAT	RBY	IMF
<b>+18</b>	<b>+0.8</b>	<b>-4.2</b>	<b>+54</b>	<b>+6.8</b>	<b>+0.4</b>	<b>-0.1</b>	<b>+0.0</b>	<b>+2.5</b>
57%	71%	39%	57%	55%	55%	57%	51%	49%

**INDEXES**

SR	<b>+\$111</b>	AP	<b>+\$136</b>
----	---------------	----	---------------

**ACTUAL DATA**

B Wt	200D	400D	600D	EMA
<b>38kg</b>	<b>269kg</b>	<b>558kg</b>	<b>636kg</b>	<b>98</b>

**AM Status:** AMFU**CA Status:** CAFU**NH Status:** NHFU**DD Status:** DDS6%**Comments:** Clean shouldered bull, with great eye muscle and IMF.

Purchaser:

\$

**2019 ANGUS GROUP BREEDPLAN FOR 2017 BORN CALVES**

CE Dir.	CE Dtrs	GL	Bth Wt	200D	400D	600D	MAT WT	Milk
+0.2	+0.4	-4.0	+4.3	+44	+81	+106	+91	+15

SS	DTC	CWT	EMA	RIB	RUMP	RBY	IMF
+1.8	-4.2	+59	+5.1	+0.0	-0.2	+0.4	+1.7

**INDEXES**

SR	<b>+\$113</b>	AP	<b>+\$131</b>
----	---------------	----	---------------

**Lot: 13****PETERS ANGUS 336**

Born: 03/09/17

Tattoo: 21164017336

BASIN MAX 602C (IMP USA)

Sire: FOSSIL CREEK (KENHARDT) 29 (ET)

1000 OF LAIRDVALE

KAIWARA 440

Dam: PETERS ANGUS 12

PETERS ANGUS 49

**2019 ANGUS GROUP BREEDPLAN FOR 2017 BORN CALVES**

	CE		GL	Bth Wt	200D	400D	600D	MAT W
	Dir.	Dtrs						
<b>EBV</b>	<b>-0.7</b>	<b>-2.3</b>	<b>-3.6</b>	<b>+3.5</b>	<b>+34</b>	<b>+66</b>	<b>+87</b>	<b>+77</b>
<b>ACC</b>	<b>44%</b>	<b>35%</b>	<b>84%</b>	<b>74%</b>	<b>67%</b>	<b>64%</b>	<b>70%</b>	<b>63%</b>
<b>Milk</b>	<b>SS</b>	<b>DtC</b>	<b>CWT</b>	<b>EMA</b>	<b>RIB</b>	<b>FAT</b>	<b>RBY</b>	<b>IMF</b>
<b>+13</b>	<b>+1.2</b>	<b>+0.3</b>	<b>+44</b>	<b>+3.9</b>	<b>+0.2</b>	<b>-0.1</b>	<b>+0.4</b>	<b>+0.2</b>
<b>51%</b>	<b>68%</b>	<b>39%</b>	<b>56%</b>	<b>52%</b>	<b>53%</b>	<b>55%</b>	<b>49%</b>	<b>46%</b>

**INDEXES**

<b>SR</b>	<b>+\$84</b>	<b>AP</b>	<b>+\$98</b>
-----------	--------------	-----------	--------------

**ACTUAL DATA**

<b>B Wt</b>	<b>200D</b>	<b>400D</b>	<b>600D</b>	<b>EMA</b>
<b>35kg</b>	<b>271kg</b>	<b>546kg</b>	<b>578kg</b>	<b>92</b>

**AM Status:** AMFU**CA Status:** CAFU**NH Status:** NHFU**DD Status:** DDFU**Comments:** Smooth bull with barrel, meat constitution.

Purchaser:

\$

**2019 ANGUS GROUP BREEDPLAN FOR 2017 BORN CALVES**

CE Dir.	CE Dtrs	GL	Bth Wt	200D	400D	600D	MAT WT	Milk
+0.2	+0.4	-4.0	+4.3	+44	+81	+106	+91	+15

SS	DTC	CWT	EMA	RIB	RUMP	RBY	IMF
+1.8	-4.2	+59	+5.1	+0.0	-0.2	+0.4	+1.7

**INDEXES**

<b>SR</b>	<b>+\$113</b>	<b>AP</b>	<b>+\$131</b>
-----------	---------------	-----------	---------------

**Lot: 14****PETERS ANGUS 326**

Born: 02/09/17

Tattoo: 21164017326

BASIN MAX 602C (IMP USA)

Sire: FOSSIL CREEK (KENHARDT) 29 (ET)

1000 OF LAIRDVALE

KAIWARA 440

Dam: PETERS ANGUS 181

PETERS ANGUS 07 63

**2019 ANGUS GROUP BREEDPLAN FOR 2017 BORN CALVES**

	CE		GL	Bth Wt	200D	400D	600D	MAT W
	Dir.	Dtrs						
<b>EBV</b>	<b>-1.2</b>	<b>-3.6</b>	<b>-4.3</b>	<b>+4.0</b>	<b>+38</b>	<b>+75</b>	<b>+101</b>	<b>+93</b>
<b>ACC</b>	<b>44%</b>	<b>36%</b>	<b>83%</b>	<b>74%</b>	<b>67%</b>	<b>64%</b>	<b>70%</b>	<b>63%</b>
<b>Milk</b>	<b>SS</b>	<b>DtC</b>	<b>CWT</b>	<b>EMA</b>	<b>RIB</b>	<b>FAT</b>	<b>RBV</b>	<b>IMF</b>
<b>+14</b>	<b>+1.6</b>	<b>-0.1</b>	<b>+52</b>	<b>+1.6</b>	<b>+0.5</b>	<b>+0.5</b>	<b>-1.0</b>	<b>+1.2</b>
<b>51%</b>	<b>69%</b>	<b>40%</b>	<b>56%</b>	<b>53%</b>	<b>54%</b>	<b>56%</b>	<b>50%</b>	<b>47%</b>

**INDEXES**

<b>SR</b>	<b>+\$86</b>	<b>AP</b>	<b>+\$112</b>
-----------	--------------	-----------	---------------

**ACTUAL DATA**

<b>B Wt</b>	<b>200D</b>	<b>400D</b>	<b>600D</b>	<b>EMA</b>
<b>36kg</b>	<b>295kg</b>	<b>606kg</b>	<b>648kg</b>	<b>89</b>

**AM Status:** AMFU**CA Status:** CAFU**NH Status:** NHFU**DD Status:** DDS13%**Comments:** A bull with carcass bone and growth.

Purchaser:

\$

**2019 ANGUS GROUP BREEDPLAN FOR 2017 BORN CALVES**

CE Dir.	CE Dtrs	GL	Bth Wt	200D	400D	600D	MAT WT	Milk
+0.2	+0.4	-4.0	+4.3	+44	+81	+106	+91	+15

SS	DTC	CWT	EMA	RIB	RUMP	RBV	IMF
+1.8	-4.2	+59	+5.1	+0.0	-0.2	+0.4	+1.7

**INDEXES**

<b>SR</b>	<b>+\$113</b>	<b>AP</b>	<b>+\$131</b>
-----------	---------------	-----------	---------------

**Lot: 15****PETERS ANGUS 375**

Born: 08/09/17

Tattoo: 21164017375

BASIN MAX 602C (IMP USA)

Sire: FOSSIL CREEK (KENHARDT) 29 (ET)

1000 OF LAIRDVALE

TE MANIA 11 470

Dam: PETERS ANGUS 312

PETERS ANGUS 12 12

**2019 ANGUS GROUP BREEDPLAN FOR 2017 BORN CALVES**

	CE		GL	Bth Wt	200D	400D	600D	MAT W
	Dir.	Dtrs						
<b>EBV</b>	<b>-1.9</b>	<b>-2.8</b>	<b>-1.0</b>	<b>+3.9</b>	<b>+33</b>	<b>+68</b>	<b>+86</b>	<b>+74</b>
ACC	43%	35%	83%	74%	67%	64%	70%	63%
Milk	SS	DtC	CWT	EMA	RIB	FAT	RBV	IMF
<b>+13</b>	<b>+1.9</b>	<b>-3.0</b>	<b>+44</b>	<b>+4.4</b>	<b>+1.6</b>	<b>+2.2</b>	<b>-0.6</b>	<b>+1.0</b>
50%	68%	38%	55%	52%	53%	55%	49%	46%

**INDEXES**

SR	<b>+\$97</b>	AP	<b>+\$111</b>
----	--------------	----	---------------

**ACTUAL DATA**

B Wt	200D	400D	600D	EMA
<b>34kg</b>	<b>206kg</b>	<b>520kg</b>	<b>588kg</b>	<b>87</b>

**AM Status:** AMFU**CA Status:** CAFU**NH Status:** NHFU**DD Status:** DDFU**Comments:** Compact, solid meaty, nice tidy up front bull.

Purchaser:

\$

**2019 ANGUS GROUP BREEDPLAN FOR 2017 BORN CALVES**

CE Dir.	CE Dtrs	GL	Bth Wt	200D	400D	600D	MAT WT	Milk
+0.2	+0.4	-4.0	+4.3	+44	+81	+106	+91	+15

SS	DTC	CWT	EMA	RIB	RUMP	RBV	IMF
+1.8	-4.2	+59	+5.1	+0.0	-0.2	+0.4	+1.7

**INDEXES**

SR	<b>+\$113</b>	AP	<b>+\$131</b>
----	---------------	----	---------------

**Lot: 16****PETERS ANGUS 426**

Born: 23/09/17

Tattoo: 21164017426

BASIN MAX 602C (IMP USA)

Sire: FOSSIL CREEK (KENHARDT) 29 (ET)

1000 OF LAIRDVALE

WHANGARA 06328

Dam: PETERS ANGUS 339

PETERS ANGUS 05 30

**2019 ANGUS GROUP BREEDPLAN FOR 2017 BORN CALVES**

	CE		GL	Bth Wt	200D	400D	600D	MAT W
	Dir.	Dtrs						
<b>EBV</b>	<b>-3.4</b>	<b>-2.8</b>	<b>-0.3</b>	<b>+5.3</b>	<b>+31</b>	<b>+60</b>	<b>+83</b>	<b>+82</b>
ACC	42%	32%	52%	74%	67%	64%	70%	63%
Milk	SS	DtC	CWT	EMA	RIB	FAT	RBY	IMF
<b>+13</b>	<b>+1.3</b>	<b>+2.1</b>	<b>+38</b>	<b>+3.9</b>	<b>-0.9</b>	<b>-1.7</b>	<b>+1.4</b>	<b>-0.4</b>
53%	68%	35%	55%	50%	50%	53%	46%	42%

**INDEXES**

SR	<b>+\$57</b>	AP	<b>+\$74</b>
----	--------------	----	--------------

**ACTUAL DATA**

B Wt	200D	400D	600D	EMA
<b>40kg</b>	<b>267kg</b>	<b>548kg</b>	<b>616kg</b>	<b>90</b>

**AM Status:** AMFU**CA Status:** CAS1%**NH Status:** NHFU**DD Status:** DDFU**Comments:** Thick coated bull, with density bone and soundness.

Purchaser: \$

**2019 ANGUS GROUP BREEDPLAN FOR 2017 BORN CALVES**

CE Dir.	CE Dtrs	GL	Bth Wt	200D	400D	600D	MAT WT	Milk
+0.2	+0.4	-4.0	+4.3	+44	+81	+106	+91	+15

SS	DTC	CWT	EMA	RIB	RUMP	RBY	IMF
+1.8	-4.2	+59	+5.1	+0.0	-0.2	+0.4	+1.7

**INDEXES**

SR	<b>+\$113</b>	AP	<b>+\$131</b>
----	---------------	----	---------------

**Lot: 17****PETERS ANGUS 307**

Born: 31/08/17

Tattoo: 21164017307

BASIN MAX 602C (IMP USA)

Sire: FOSSIL CREEK (KENHARDT) 29 (ET)

1000 OF LAIRDVALE

TE MANIA 11 470

Dam: PETERS ANGUS 337

PETERS ANGUS 7

**2019 ANGUS GROUP BREEDPLAN FOR 2017 BORN CALVES**

	CE		GL	Bth Wt	200D	400D	600D	MAT W
	Dir.	Dtrs						
<b>EBV</b>	<b>-0.7</b>	<b>-2.1</b>	<b>-1.4</b>	<b>+3.0</b>	<b>+30</b>	<b>+66</b>	<b>+82</b>	<b>+66</b>
<b>ACC</b>	<b>42%</b>	<b>34%</b>	<b>56%</b>	<b>73%</b>	<b>67%</b>	<b>64%</b>	<b>70%</b>	<b>63%</b>
<b>Milk</b>	<b>SS</b>	<b>DtC</b>	<b>CWT</b>	<b>EMA</b>	<b>RIB</b>	<b>FAT</b>	<b>RBY</b>	<b>IMF</b>
<b>+16</b>	<b>+1.9</b>	<b>-2.6</b>	<b>+43</b>	<b>+5.5</b>	<b>+1.4</b>	<b>+1.4</b>	<b>-0.3</b>	<b>+1.2</b>
<b>50%</b>	<b>69%</b>	<b>38%</b>	<b>55%</b>	<b>52%</b>	<b>53%</b>	<b>55%</b>	<b>49%</b>	<b>46%</b>

**INDEXES**

<b>SR</b>	<b>+\$99</b>	<b>AP</b>	<b>+\$114</b>
-----------	--------------	-----------	---------------

**ACTUAL DATA**

<b>B Wt</b>	<b>200D</b>	<b>400D</b>	<b>600D</b>	<b>EMA</b>
<b>30kg</b>	<b>249kg</b>	<b>558kg</b>	<b>618kg</b>	<b>95</b>

**AM Status:** AMFU**CA Status:** CAFU**NH Status:** NHFU**DD Status:** DDS4%**Comments:** Tidy compact bull with constitution, volume and carriage.

Purchaser:

\$

**2019 ANGUS GROUP BREEDPLAN FOR 2017 BORN CALVES**

<b>CE Dir.</b>	<b>CE Dtrs</b>	<b>GL</b>	<b>Bth Wt</b>	<b>200D</b>	<b>400D</b>	<b>600D</b>	<b>MAT WT</b>	<b>Milk</b>
+0.2	+0.4	-4.0	+4.3	+44	+81	+106	+91	+15

<b>SS</b>	<b>DTC</b>	<b>CWT</b>	<b>EMA</b>	<b>RIB</b>	<b>RUMP</b>	<b>RBY</b>	<b>IMF</b>
+1.8	-4.2	+59	+5.1	+0.0	-0.2	+0.4	+1.7

**INDEXES**

<b>SR</b>	<b>+\$113</b>	<b>AP</b>	<b>+\$131</b>
-----------	---------------	-----------	---------------

---

**Lot: 18****319/17 UNREGISTERED**

---

Born: 02/09/17

Tattoo:

Sire: 2015 FOSSIL CREEK K29

Dam:

**Comments:** Clean, smoothed well balanced bull.

Purchaser: \$

2019 ANGUS GROUP BREEDPLAN FOR 2017 BORN CALVES								
CE Dir.	CE Dtrs	GL	Bth Wt	200D	400D	600D	MAT WT	Milk
+0.2	+0.4	-4.0	+4.3	+44	+81	+106	+91	+15
SS	DTC	CWT	EMA	RIB	RUMP	RBY	IMF	
+1.8	-4.2	+59	+5.1	+0.0	-0.2	+0.4	+1.7	
INDEXES								
SR		+\$113			AP		+\$131	



**Lot: 19****PETERS ANGUS 343**

Born: 04/09/17

Tattoo: 21164017343

BASIN MAX 602C (IMP USA)

Sire: FOSSIL CREEK (KENHARDT) 29 (ET)

1000 OF LAIRDVALE

KAIWARA 440

Dam: PETERS ANGUS 22

PETERS ANGUS 29

**2019 ANGUS GROUP BREEDPLAN FOR 2017 BORN CALVES**

	CE		GL	Bth Wt	200D	400D	600D	MAT W
	Dir.	Dtrs						
<b>EBV</b>	<b>+0.4</b>	<b>-1.6</b>	<b>-3.7</b>	<b>+3.1</b>	<b>+31</b>	<b>+61</b>	<b>+77</b>	<b>+71</b>
ACC	43%	35%	83%	73%	67%	64%	70%	63%
Milk	SS	DtC	CWT	EMA	RIB	FAT	RBY	IMF
<b>+12</b>	<b>+0.5</b>	<b>-1.3</b>	<b>+37</b>	<b>+0.1</b>	<b>+1.7</b>	<b>+2.5</b>	<b>-1.4</b>	<b>+0.5</b>
50%	68%	38%	55%	52%	53%	54%	48%	45%

**INDEXES**

SR	<b>+\$79</b>	AP	<b>+\$87</b>
----	--------------	----	--------------

**ACTUAL DATA**

B Wt	200D	400D	600D	EMA
<b>33kg</b>	<b>278kg</b>	<b>536kg</b>	<b>616kg</b>	<b>80</b>

AM Status: AMFU

CA Status: CAFU

NH Status: NHFU

DD Status: DDFU

**Comments:** Clean, soft type of bull with sound confirmation.

Purchaser:

\$

**2019 ANGUS GROUP BREEDPLAN FOR 2017 BORN CALVES**

CE Dir.	CE Dtrs	GL	Bth Wt	200D	400D	600D	MAT WT	Milk
+0.2	+0.4	-4.0	+4.3	+44	+81	+106	+91	+15

SS	DTC	CWT	EMA	RIB	RUMP	RBY	IMF
+1.8	-4.2	+59	+5.1	+0.0	-0.2	+0.4	+1.7

**INDEXES**

SR	<b>+\$113</b>	AP	<b>+\$131</b>
----	---------------	----	---------------

**Lot: 20****PETERS ANGUS 401**

Born: 18/09/17

Tattoo: 21164017401

BASIN MAX 602C (IMP USA)

Sire: FOSSIL CREEK (KENHARDT) 29 (ET)

1000 OF LAIRDVALE

PETERS ANGUS 07 6

Dam: PETERS ANGUS 09 488

PETERS ANGUS 07 82

**2019 ANGUS GROUP BREEDPLAN FOR 2017 BORN CALVES**

	CE		GL	Bth Wt	200D	400D	600D	MAT W
	Dir.	Dtrs						
<b>EBV</b>	<b>-2.4</b>	<b>-3.9</b>	<b>+4.1</b>	<b>+3.4</b>	<b>+30</b>	<b>+57</b>	<b>+71</b>	<b>+60</b>
ACC	42%	34%	83%	74%	67%	65%	71%	63%
Milk	SS	DtC	CWT	EMA	RIB	FAT	RBV	IMF
<b>+10</b>	<b>+1.2</b>	<b>-0.7</b>	<b>+33</b>	<b>+3.6</b>	<b>+1.5</b>	<b>+1.0</b>	<b>-0.7</b>	<b>+0.7</b>
53%	68%	38%	55%	52%	54%	56%	49%	46%

**INDEXES**

SR	<b>+\$68</b>	AP	<b>+\$75</b>
----	--------------	----	--------------

**ACTUAL DATA**

B Wt	200D	400D	600D	EMA
<b>34kg</b>	<b>266kg</b>	<b>558kg</b>	<b>586kg</b>	<b>94</b>

**AM Status:** AMFU**CA Status:** CAFU**NH Status:** NHFU**DD Status:** DDS13%**Comments:** Good sound functional type bull.

Purchaser:

\$

**2019 ANGUS GROUP BREEDPLAN FOR 2017 BORN CALVES**

CE Dir.	CE Dtrs	GL	Bth Wt	200D	400D	600D	MAT WT	Milk
+0.2	+0.4	-4.0	+4.3	+44	+81	+106	+91	+15

SS	DTC	CWT	EMA	RIB	RUMP	RBV	IMF
+1.8	-4.2	+59	+5.1	+0.0	-0.2	+0.4	+1.7

**INDEXES**

SR	<b>+\$113</b>	AP	<b>+\$131</b>
----	---------------	----	---------------

**Lot: 21****PETERS ANGUS 486**

Born: 04/10/17

Tattoo: 21164017486

TE MANIA 11 470

Sire: PETERS ANGUS 350

PETERS ANGUS 265

KAIWARA 440

Dam: PETERS ANGUS 12 12

PETERS ANGUS 134

**2019 ANGUS GROUP BREEDPLAN FOR 2017 BORN CALVES**

	CE		GL	Bth Wt	200D	400D	600D	MAT W
	Dir.	Dtrs						
<b>EBV</b>	<b>-1.5</b>	<b>-2.8</b>	<b>-2.7</b>	<b>+3.6</b>	<b>+36</b>	<b>+70</b>	<b>+90</b>	<b>+81</b>
ACC	43%	32%	53%	74%	68%	65%	71%	63%
Milk	SS	DtC	CWT	EMA	RIB	FAT	RBV	IMF
<b>+21</b>	<b>+0.5</b>	<b>-3.5</b>	<b>+53</b>	<b>+3.5</b>	<b>+0.3</b>	<b>+1.2</b>	<b>-1.5</b>	<b>+2.2</b>
50%	70%	34%	56%	53%	53%	55%	49%	46%

**INDEXES**

SR	<b>+\$94</b>	AP	<b>+\$116</b>
----	--------------	----	---------------

**ACTUAL DATA**

B Wt	200D	400D	600D	EMA
<b>36kg</b>	<b>241kg</b>	<b>506kg</b>	<b>542kg</b>	<b>82</b>

**AM Status:** AMFU**CA Status:** CAFU**NH Status:** NHFU**DD Status:** DDS3%**Comments:** Thick bull, showing typical sire traits.

Purchaser:

\$

**2019 ANGUS GROUP BREEDPLAN FOR 2017 BORN CALVES**

CE Dir.	CE Dtrs	GL	Bth Wt	200D	400D	600D	MAT WT	Milk
+0.2	+0.4	-4.0	+4.3	+44	+81	+106	+91	+15

SS	DTC	CWT	EMA	RIB	RUMP	RBV	IMF
+1.8	-4.2	+59	+5.1	+0.0	-0.2	+0.4	+1.7

**INDEXES**

SR	<b>+\$113</b>	AP	<b>+\$131</b>
----	---------------	----	---------------

**Lot: 22****PETERS ANGUS 408**

Born: 20/09/17

Tattoo: 21164017408

WHANGARA 404

Sire: PETERS ANGUS 472

PETERS ANGUS 300

FOSSIL CREEK HERO H006

Dam: PETERS ANGUS 85

PETERS ANGUS 12 198

**2019 ANGUS GROUP BREEDPLAN FOR 2017 BORN CALVES**

	CE		GL	Bth Wt	200D	400D	600D	MAT W
	Dir.	Dtrs						
<b>EBV</b>	<b>-3.1</b>	<b>+0.4</b>	<b>-3.0</b>	<b>+4.2</b>	<b>+41</b>	<b>+74</b>	<b>+98</b>	<b>+71</b>
ACC	37%	28%	46%	72%	64%	60%	66%	59%
Milk	SS	DtC	CWT	EMA	RIB	FAT	RBY	IMF
<b>+17</b>	<b>+2.0</b>	<b>-1.8</b>	<b>+51</b>	<b>+4.8</b>	<b>+0.5</b>	<b>+1.2</b>	<b>+0.8</b>	<b>+0.6</b>
42%	62%	30%	51%	47%	47%	49%	44%	41%

**INDEXES**

SR	<b>+\$110</b>	AP	<b>+\$124</b>
----	---------------	----	---------------

**ACTUAL DATA**

B Wt	200D	400D	600D	EMA
<b>34kg</b>	<b>260kg</b>	<b>520kg</b>	<b>594kg</b>	<b>87</b>

**AM Status:** AMS3%**CA Status:** CAFU**NH Status:** NHS3%**DD Status:** DDS6%**Comments:** Soft bull with plenty of potential.

Purchaser:

\$

**2019 ANGUS GROUP BREEDPLAN FOR 2017 BORN CALVES**

CE Dir.	CE Dtrs	GL	Bth Wt	200D	400D	600D	MAT WT	Milk
+0.2	+0.4	-4.0	+4.3	+44	+81	+106	+91	+15

SS	DTC	CWT	EMA	RIB	RUMP	RBY	IMF
+1.8	-4.2	+59	+5.1	+0.0	-0.2	+0.4	+1.7

**INDEXES**

SR	<b>+\$113</b>	AP	<b>+\$131</b>
----	---------------	----	---------------

**Lot: 23****PETERS ANGUS 380**

Born: 11/09/17

Tattoo: 21164017380

BASIN MAX 602C (IMP USA)

Sire: FOSSIL CREEK (KENHARDT) 29 (ET)

1000 OF LAIRDVALE

STERN 10702

Dam: PETERS ANGUS 163

PETERS ANGUS 07 141

**2019 ANGUS GROUP BREEDPLAN FOR 2017 BORN CALVES**

	CE		GL	Bth Wt	200D	400D	600D	MAT W
	Dir.	Dtrs						
<b>EBV</b>	<b>-1.8</b>	<b>-2.9</b>	<b>+1.0</b>	<b>+3.4</b>	<b>+27</b>	<b>+59</b>	<b>+76</b>	<b>+61</b>
ACC	42%	34%	83%	74%	67%	64%	70%	63%
Milk	SS	DtC	CWT	EMA	RIB	FAT	RBY	IMF
<b>+13</b>	<b>+2.3</b>	<b>-2.0</b>	<b>+32</b>	<b>+1.8</b>	<b>+1.4</b>	<b>+1.5</b>	<b>-0.3</b>	<b>+0.3</b>
49%	68%	37%	55%	52%	52%	55%	48%	45%

**INDEXES**

SR	<b>+\$77</b>	AP	<b>+\$87</b>
----	--------------	----	--------------

**ACTUAL DATA**

B Wt	200D	400D	600D	EMA
<b>33kg</b>	<b>257kg</b>	<b>534kg</b>	<b>556kg</b>	<b>79</b>

**AM Status:** AMFU**CA Status:** CAFU**NH Status:** NHFU**DD Status:** DDS13%**Comments:** Compact, well muscled, grunty sire.

Purchaser:

\$

**2019 ANGUS GROUP BREEDPLAN FOR 2017 BORN CALVES**

CE Dir.	CE Dtrs	GL	Bth Wt	200D	400D	600D	MAT WT	Milk
+0.2	+0.4	-4.0	+4.3	+44	+81	+106	+91	+15

SS	DTC	CWT	EMA	RIB	RUMP	RBY	IMF
+1.8	-4.2	+59	+5.1	+0.0	-0.2	+0.4	+1.7

**INDEXES**

SR	<b>+\$113</b>	AP	<b>+\$131</b>
----	---------------	----	---------------

**Lot: 24****PETERS ANGUS 366**

Born: 07/09/17

Tattoo: 21164017366

BASIN MAX 602C (IMP USA)

Sire: FOSSIL CREEK (KENHARDT) 29 (ET)

1000 OF LAIRDVALE

STERN 10702

Dam: PETERS ANGUS 166

PETERS ANGUS 08 85

**2019 ANGUS GROUP BREEDPLAN FOR 2017 BORN CALVES**

	CE		GL	Bth Wt	200D	400D	600D	MAT W
	Dir.	Dtrs						
<b>EBV</b>	<b>+0.1</b>	<b>-0.9</b>	<b>-1.1</b>	<b>+3.2</b>	<b>+27</b>	<b>+59</b>	<b>+74</b>	<b>+59</b>
ACC	42%	33%	83%	73%	67%	64%	70%	62%
Milk	SS	DtC	CWT	EMA	RIB	FAT	RBY	IMF
<b>+10</b>	<b>+1.3</b>	<b>-0.8</b>	<b>+33</b>	<b>+5.4</b>	<b>+1.1</b>	<b>+1.0</b>	<b>+0.4</b>	<b>-0.3</b>
48%	68%	36%	54%	50%	51%	53%	47%	43%

**INDEXES**

SR	<b>+\$87</b>	AP	<b>+\$94</b>
----	--------------	----	--------------

**ACTUAL DATA**

B Wt	200D	400D	600D	EMA
<b>34kg</b>	<b>254kg</b>	<b>546kg</b>	<b>566kg</b>	<b>98</b>

**AM Status:** AMFU**CA Status:** CAFU**NH Status:** NHFU**DD Status:** DDFU**Comments:** Compact, thick, meaty, easy doing.

Purchaser:

\$

**2019 ANGUS GROUP BREEDPLAN FOR 2017 BORN CALVES**

CE Dir.	CE Dtrs	GL	Bth Wt	200D	400D	600D	MAT WT	Milk
+0.2	+0.4	-4.0	+4.3	+44	+81	+106	+91	+15

SS	DTC	CWT	EMA	RIB	RUMP	RBY	IMF
+1.8	-4.2	+59	+5.1	+0.0	-0.2	+0.4	+1.7

**INDEXES**

SR	<b>+\$113</b>	AP	<b>+\$131</b>
----	---------------	----	---------------

**Lot: 25****PETERS ANGUS 422**

Born: 22/09/17

Tattoo: 21164017422

BRAVEHEART OF STERN

Sire: STERN 10702

STERN 6452

WHANGARA 404

Dam: PETERS ANGUS 417

PETERS ANGUS 07 80

**2019 ANGUS GROUP BREEDPLAN FOR 2017 BORN CALVES**

	CE		GL	Bth Wt	200D	400D	600D	MAT W
	Dir.	Dtrs						
<b>EBV</b>	<b>-0.9</b>	<b>-0.4</b>	<b>-0.5</b>	<b>+4.1</b>	<b>+32</b>	<b>+66</b>	<b>+91</b>	<b>+68</b>
ACC	45%	36%	56%	74%	68%	66%	71%	64%
Milk	SS	DtC	CWT	EMA	RIB	FAT	RBV	IMF
<b>+17</b>	<b>+1.9</b>	<b>-2.0</b>	<b>+37</b>	<b>+3.7</b>	<b>+0.5</b>	<b>+0.6</b>	<b>+0.5</b>	<b>+0.5</b>
55%	70%	35%	56%	55%	54%	57%	50%	46%

**INDEXES**

SR	<b>+\$97</b>	AP	<b>+\$119</b>
----	--------------	----	---------------

**ACTUAL DATA**

B Wt	200D	400D	600D	EMA
<b>36kg</b>	<b>257kg</b>	<b>560kg</b>	<b>628kg</b>	<b>92</b>

**AM Status:** AMFU**CA Status:** CAFU**NH Status:** NHFU**DD Status:** DDFU**Comments:** Good all round Stern son, moderate frame & carcass.

Purchaser: \$

**2019 ANGUS GROUP BREEDPLAN FOR 2017 BORN CALVES**

CE Dir.	CE Dtrs	GL	Bth Wt	200D	400D	600D	MAT WT	Milk
+0.2	+0.4	-4.0	+4.3	+44	+81	+106	+91	+15

SS	DTC	CWT	EMA	RIB	RUMP	RBV	IMF
+1.8	-4.2	+59	+5.1	+0.0	-0.2	+0.4	+1.7

**INDEXES**

SR	<b>+\$113</b>	AP	<b>+\$131</b>
----	---------------	----	---------------

**Lot: 26****PETERS ANGUS 489**

Born: 04/10/17

Tattoo: 21164017489

BASIN MAX 602C (IMP USA)

Sire: FOSSIL CREEK (KENHARDT) 29 (ET)

1000 OF LAIRDVALE

KAIWARA 440

Dam: PETERS ANGUS 253

PETERS ANGUS 09 567

**2019 ANGUS GROUP BREEDPLAN FOR 2017 BORN CALVES**

	CE		GL	Bth Wt	200D	400D	600D	MAT W
	Dir.	Dtrs						
<b>EBV</b>	<b>-0.9</b>	<b>-2.9</b>	<b>-1.2</b>	<b>+2.9</b>	<b>+27</b>	<b>+59</b>	<b>+77</b>	<b>+70</b>
ACC	44%	36%	54%	74%	68%	65%	71%	63%
Milk	SS	DtC	CWT	EMA	RIB	FAT	RBV	IMF
<b>+14</b>	<b>+0.9</b>	<b>+0.1</b>	<b>+38</b>	<b>+2.8</b>	<b>+0.1</b>	<b>+0.2</b>	<b>+0.0</b>	<b>+0.0</b>
53%	69%	39%	56%	54%	54%	56%	50%	47%

**INDEXES**

SR	+\$69	AP	+\$81
----	-------	----	-------

**ACTUAL DATA**

B Wt	200D	400D	600D	EMA
<b>33kg</b>	<b>232kg</b>	<b>502kg</b>	<b>576kg</b>	<b>83</b>

AM Status: AMFU

CA Status: CAFU

NH Status: NHFU

DD Status: DDFU

Comments: Low birth, easy doing run bull.

Purchaser:

\$

**2019 ANGUS GROUP BREEDPLAN FOR 2017 BORN CALVES**

CE Dir.	CE Dtrs	GL	Bth Wt	200D	400D	600D	MAT WT	Milk
+0.2	+0.4	-4.0	+4.3	+44	+81	+106	+91	+15

SS	DTC	CWT	EMA	RIB	RUMP	RBV	IMF
+1.8	-4.2	+59	+5.1	+0.0	-0.2	+0.4	+1.7

**INDEXES**

SR	+\$113	AP	+\$131
----	--------	----	--------



**Lot: 27****PETERS ANGUS 512**

Born: 11/10/17

Tattoo: 21164017512

BASIN MAX 602C (IMP USA)

Sire: FOSSIL CREEK (KENHARDT) 29 (ET)

1000 OF LAIRDVALE

WHANGARA 404

Dam: PETERS ANGUS 49

PETERS ANGUS 08 25

**2019 ANGUS GROUP BREEDPLAN FOR 2017 BORN CALVES**

	CE		GL	Bth Wt	200D	400D	600D	MAT W
	Dir.	Dtrs						
<b>EBV</b>	<b>-2.6</b>	<b>-2.5</b>	<b>+0.9</b>	<b>+3.8</b>	<b>+29</b>	<b>+59</b>	<b>+76</b>	<b>+62</b>
<b>ACC</b>	<b>43%</b>	<b>34%</b>	<b>83%</b>	<b>74%</b>	<b>68%</b>	<b>65%</b>	<b>71%</b>	<b>64%</b>
<b>Milk</b>	<b>SS</b>	<b>DtC</b>	<b>CWT</b>	<b>EMA</b>	<b>RIB</b>	<b>FAT</b>	<b>RBV</b>	<b>IMF</b>
<b>+12</b>	<b>+1.7</b>	<b>-0.4</b>	<b>+36</b>	<b>+7.0</b>	<b>+1.1</b>	<b>+0.4</b>	<b>+1.0</b>	<b>-0.1</b>
<b>53%</b>	<b>69%</b>	<b>38%</b>	<b>56%</b>	<b>52%</b>	<b>52%</b>	<b>55%</b>	<b>48%</b>	<b>44%</b>

**INDEXES**

<b>SR</b>	<b>+\$80</b>	<b>AP</b>	<b>+\$88</b>
-----------	--------------	-----------	--------------

**ACTUAL DATA**

<b>B Wt</b>	<b>200D</b>	<b>400D</b>	<b>600D</b>	<b>EMA</b>
<b>36kg</b>	<b>227kg</b>	<b>522kg</b>	<b>584kg</b>	<b>103</b>

**AM Status:** AMFU**CA Status:** CAFU**NH Status:** NHFU**DD Status:** DDFU**Comments:** Later born, meaty, compact, well muscled bull.

Purchaser: \$

**2019 ANGUS GROUP BREEDPLAN FOR 2017 BORN CALVES**

CE Dir.	CE Dtrs	GL	Bth Wt	200D	400D	600D	MAT WT	Milk
+0.2	+0.4	-4.0	+4.3	+44	+81	+106	+91	+15

SS	DTC	CWT	EMA	RIB	RUMP	RBV	IMF
+1.8	-4.2	+59	+5.1	+0.0	-0.2	+0.4	+1.7

**INDEXES**

<b>SR</b>	<b>+\$113</b>	<b>AP</b>	<b>+\$131</b>
-----------	---------------	-----------	---------------

**Lot: 28****PETERS ANGUS 381**

Born: 11/09/17

Tattoo: 21164017381

BASIN MAX 602C (IMP USA)

Sire: FOSSIL CREEK (KENHARDT) 29 (ET)

1000 OF LAIRDVALE

KAIWARA 440

Dam: PETERS ANGUS 11

PETERS ANGUS 21

**2019 ANGUS GROUP BREEDPLAN FOR 2017 BORN CALVES**

	CE		GL	Bth Wt	200D	400D	600D	MAT W
	Dir.	Dtrs						
<b>EBV</b>	<b>-2.3</b>	<b>-3.4</b>	<b>+0.7</b>	<b>+3.6</b>	<b>+32</b>	<b>+65</b>	<b>+84</b>	<b>+74</b>
ACC	43%	35%	83%	73%	67%	64%	70%	63%
Milk	SS	DtC	CWT	EMA	RIB	FAT	RBY	IMF
<b>+14</b>	<b>+1.7</b>	<b>-0.9</b>	<b>+42</b>	<b>+2.6</b>	<b>+0.6</b>	<b>+1.0</b>	<b>-0.5</b>	<b>+0.4</b>
50%	68%	39%	55%	52%	53%	55%	49%	46%

**INDEXES**

SR	<b>+\$76</b>	AP	<b>+\$88</b>
----	--------------	----	--------------

**ACTUAL DATA**

B Wt	200D	400D	600D	EMA
<b>35kg</b>	<b>279kg</b>	<b>534kg</b>	<b>576kg</b>	<b>88</b>

**AM Status:** AMFU**CA Status:** CAFU**NH Status:** NHFU**DD Status:** DDFU**Comments:** Moderate framed, sound all round, station bull.

Purchaser:

\$

**2019 ANGUS GROUP BREEDPLAN FOR 2017 BORN CALVES**

CE Dir.	CE Dtrs	GL	Bth Wt	200D	400D	600D	MAT WT	Milk
+0.2	+0.4	-4.0	+4.3	+44	+81	+106	+91	+15

SS	DTC	CWT	EMA	RIB	RUMP	RBY	IMF
+1.8	-4.2	+59	+5.1	+0.0	-0.2	+0.4	+1.7

**INDEXES**

SR	<b>+\$113</b>	AP	<b>+\$131</b>
----	---------------	----	---------------

**Lot: 29****PETERS ANGUS 462**

Born: 30/09/17

Tattoo: 21164017462

TUWHARETOA REGENT D145(AI)(ET) (IMP AUS)

Sire: TE MANIA 11 470

TE MANIA 05 237

PETERS ANGUS 09 462

Dam: PETERS ANGUS 277

PETERS ANGUS 09 537

**2019 ANGUS GROUP BREEDPLAN FOR 2017 BORN CALVES**

	CE		GL	Bth Wt	200D	400D	600D	MAT W
	Dir.	Dtrs						
<b>EBV</b>	<b>-4.8</b>	<b>-4.3</b>	<b>-1.4</b>	<b>+6.4</b>	<b>+40</b>	<b>+74</b>	<b>+95</b>	<b>+92</b>
ACC	46%	38%	58%	74%	69%	67%	72%	65%
Milk	SS	DtC	CWT	EMA	RIB	FAT	RBY	IMF
<b>+17</b>	<b>+1.2</b>	<b>-5.1</b>	<b>+54</b>	<b>+5.8</b>	<b>+0.2</b>	<b>-0.1</b>	<b>+0.8</b>	<b>+1.8</b>
57%	71%	38%	57%	56%	56%	58%	52%	49%

**INDEXES**

SR	<b>+\$104</b>	AP	<b>+\$125</b>
----	---------------	----	---------------

**ACTUAL DATA**

B Wt	200D	400D	600D	EMA
<b>41kg</b>	<b>252kg</b>	<b>524kg</b>	<b>560kg</b>	<b>88</b>

**AM Status:** AMFU**CA Status:** CAFU**NH Status:** NHFU**DD Status:** DDS6%**Comments:** Moderate frame, tidy run bull.

Purchaser:

\$

**2019 ANGUS GROUP BREEDPLAN FOR 2017 BORN CALVES**

CE Dir.	CE Dtrs	GL	Bth Wt	200D	400D	600D	MAT WT	Milk
+0.2	+0.4	-4.0	+4.3	+44	+81	+106	+91	+15

SS	DTC	CWT	EMA	RIB	RUMP	RBY	IMF
+1.8	-4.2	+59	+5.1	+0.0	-0.2	+0.4	+1.7

**INDEXES**

SR	<b>+\$113</b>	AP	<b>+\$131</b>
----	---------------	----	---------------

**Lot: 30****PETERS ANGUS 302**

Born: 28/08/17

Tattoo: 21164017302

BASIN MAX 602C (IMP USA)

Sire: FOSSIL CREEK (KENHARDT) 29 (ET)

1000 OF LAIRDVALE

FOSSIL CREEK HERO H006

Dam: PETERS ANGUS 6

PETERS ANGUS 12 162

**2019 ANGUS GROUP BREEDPLAN FOR 2017 BORN CALVES**

	CE		GL	Bth Wt	200D	400D	600D	MAT W
	Dir.	Dtrs						
<b>EBV</b>	<b>+0.2</b>	<b>+1.2</b>	<b>-6.1</b>	<b>+2.3</b>	<b>+28</b>	<b>+56</b>	<b>+68</b>	<b>+46</b>
<b>ACC</b>	<b>42%</b>	<b>34%</b>	<b>83%</b>	<b>73%</b>	<b>66%</b>	<b>63%</b>	<b>68%</b>	<b>61%</b>
<b>Milk</b>	<b>SS</b>	<b>DtC</b>	<b>CWT</b>	<b>EMA</b>	<b>RIB</b>	<b>FAT</b>	<b>RBV</b>	<b>IMF</b>
<b>+11</b>	<b>+1.6</b>	<b>-2.0</b>	<b>+30</b>	<b>+3.1</b>	<b>+2.4</b>	<b>+3.8</b>	<b>-0.6</b>	<b>+0.4</b>
<b>48%</b>	<b>65%</b>	<b>37%</b>	<b>55%</b>	<b>51%</b>	<b>52%</b>	<b>54%</b>	<b>48%</b>	<b>46%</b>

**INDEXES**

<b>SR</b>	<b>+\$96</b>	<b>AP</b>	<b>+\$97</b>
-----------	--------------	-----------	--------------

**ACTUAL DATA**

<b>B Wt</b>	<b>200D</b>	<b>400D</b>	<b>600D</b>	<b>EMA</b>
<b>29kg</b>	<b>242kg</b>	<b>481kg</b>	<b>520kg</b>	<b>76</b>

**AM Status:** AMFU**CA Status:** CAFU**NH Status:** NHFU**DD Status:** DDFU**Comments:** Low birth bull with high fats, great heifer option.

Purchaser: \$

**2019 ANGUS GROUP BREEDPLAN FOR 2017 BORN CALVES**

CE Dir.	CE Dtrs	GL	Bth Wt	200D	400D	600D	MAT WT	Milk
+0.2	+0.4	-4.0	+4.3	+44	+81	+106	+91	+15

SS	DTC	CWT	EMA	RIB	RUMP	RBV	IMF
+1.8	-4.2	+59	+5.1	+0.0	-0.2	+0.4	+1.7

**INDEXES**

<b>SR</b>	<b>+\$113</b>	<b>AP</b>	<b>+\$131</b>
-----------	---------------	-----------	---------------

## DEVELOPMENTAL DUPLICATIONS DD

This latest identified genetic disorder in Angus Cattle has just been notified to Angus NZ members and so far there has not been time to test for this defect.

The DD gene mutation was discovered by Professor Jon Beever of the University of Illinois, who has been working on this issue over the past four years. This was in conjunction with Australian researchers who had been presented with deformed calves unrelated to any previous Genetic Defects.

In a nutshell, the board of Angus NZ is of the view that the best way of reducing DD, and in fact all other identified defects, is for Angus NZ Members to use GeneProb results and strategic DNA testing to **identify non-carriers as the preferred future parents**. An accurate diagnostic test to identify DD has been developed and which Angus NZ is working to secure for use here in the near future. The new DD mutation is not expected to be more than a short-term problem for breeders to deal with.

**Peters Angus** will be actioning all recommendations & rule changes made by the Board of Angus NZ, to best manage this latest defect.

# NOTES



# NOTES



# NOTES





# WE'VE MADE BULLS MORE ATTRACTIVE.

14 days  
**FREE**  
cover

**6.5%**  
for 12  
months

The handsome beasts in this catalogue will look even more appealing on sale day, thanks to FMG – the country's leading rural insurer. With 14 days free Exclusive Bull Cover, they'll be automatically insured from the fall of the hammer, covering their transit and infertility. And you can keep that cover going for the remaining 12 months for just 6.5% of the purchase price, for bulls up to the value of \$50,000. So don't miss this chance to buy bulls covered by FMG. It's a mighty attractive offer.

Please note this is only a summary of FMG products and services and is subject to our specific product documentation. For full details, refer to the relevant policy wordings at [fmg.co.nz](http://fmg.co.nz)

*We're here for the good of the country.*

**FMG**  
Advice & Insurance

# *Exclusive Bull Cover*

## ***What is Exclusive Bull cover?***

FMG has partnered with Angus NZ to offer comprehensive insurance cover from the fall of the hammer with this vendor. All bulls auctioned at this exclusive Angus NZ and FMG sale up to the value of \$50,000 will automatically be covered under FMG's Exclusive Bull cover for 14 days at no cost to the purchaser.

## ***Length of cover***

To extend cover for the specified bull beyond 14 days you need to tick Exclusive Bull cover 12 months on the Purchaser Instruction and Insurance Slip in this catalogue. The specified bull is then covered for the remaining period of 12 months. The premium is payable to FMG and is in addition to the purchase price of the bull.

If you require an alternative cover period talk to an FMG representative.

## ***Your bull's value***

Any bull covered under this policy must be purchased for \$50,000 or less.

For any bull purchased over \$50,000 talk to an FMG representative.

## ***During the period of insurance, the specified animal is covered for:***

- Death or infertility as a result of accident, disease or illness.
- Transit.
- Theft.

## ***What we will pay***

Fair market value of your specified bull, less any amount you receive for the sale of the carcass, up to the amount shown on the insurance certificate.

## ***Disclaimer***

Please note this is only a summary of the product and is subject to our specific product documentation. For full details, you should refer to the policy document. You can get these documents, and any other information you need, from your FMG representative, by calling us or visiting our website.

## Purchaser Instruction and Insurance Slip

This slip MUST be completed and handed to the Booking Clerk before leaving the sale.

Purchaser name:		NAIT No:	
Relationship to purchaser (if purchasing on behalf of):			
Email:		Telephone:	
Postal address:		Mobile:	
Delivery address:			
Lot:	Tag:	\$	Breed: Angus DOB:
Lot:	Tag:	\$	Breed: Angus DOB:
Lot:	Tag:	\$	Breed: Angus DOB:
Lot:	Tag:	\$	Breed: Angus DOB:
Lot:	Tag:	\$	Breed: Angus DOB:

Company to be debited:

Transport instructions:

FMG Insurance Cover:



14 days - FMG Exclusive Bull cover (at no charge)



Extend cover to 12 months - FMG Exclusive Bull cover

FMG and Angus New Zealand have partnered to offer comprehensive cover for bulls.

If you would not like your information shared between the two of us, tick this box: ☐

NO VERBAL

INSTRUCTIONS

WILL BE ACCEPTED

Signature of Purchaser or Agent

Date

/

FMG OFFICE USE ONLY

Name of sale:

Date of sale:

/

FMG employee:





# PETERS GENETICS

— *Angus & Romneys* —



**TREVOR PETERS**

03 446 6030  
027 201 4490



**CLAYTON PETERS**

03 204 8817  
027 222 4421



**MORGAN PETERS**

03 204 8849  
027 440 7411

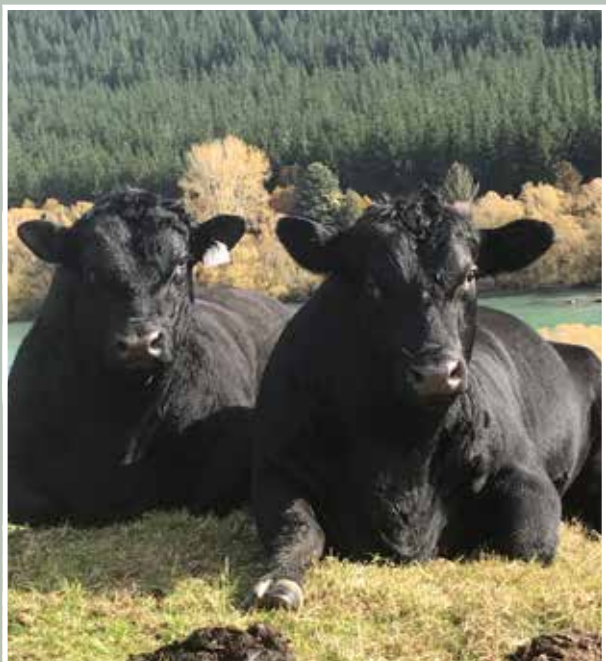


**SHANE CARTER**

027 364 1438

**CALL THE PETERS GROUP**

[www.petergenetics.co.nz](http://www.petergenetics.co.nz)







Peters Angus 2019